

Stateflow[®] Release Notes

How to Contact MathWorks



www.mathworks.com Web
comp.soft-sys.matlab Newsgroup
www.mathworks.com/contact_TS.html Technical Support



suggest@mathworks.com Product enhancement suggestions
bugs@mathworks.com Bug reports
doc@mathworks.com Documentation error reports
service@mathworks.com Order status, license renewals, passcodes
info@mathworks.com Sales, pricing, and general information



508-647-7000 (Phone)



508-647-7001 (Fax)



The MathWorks, Inc.
3 Apple Hill Drive
Natick, MA 01760-2098

For contact information about worldwide offices, see the MathWorks Web site.

Stateflow® *Release Notes*

© COPYRIGHT 2000–2011 by The MathWorks, Inc.

The software described in this document is furnished under a license agreement. The software may be used or copied only under the terms of the license agreement. No part of this manual may be photocopied or reproduced in any form without prior written consent from The MathWorks, Inc.

FEDERAL ACQUISITION: This provision applies to all acquisitions of the Program and Documentation by, for, or through the federal government of the United States. By accepting delivery of the Program or Documentation, the government hereby agrees that this software or documentation qualifies as commercial computer software or commercial computer software documentation as such terms are used or defined in FAR 12.212, DFARS Part 227.72, and DFARS 252.227-7014. Accordingly, the terms and conditions of this Agreement and only those rights specified in this Agreement, shall pertain to and govern the use, modification, reproduction, release, performance, display, and disclosure of the Program and Documentation by the federal government (or other entity acquiring for or through the federal government) and shall supersede any conflicting contractual terms or conditions. If this License fails to meet the government's needs or is inconsistent in any respect with federal procurement law, the government agrees to return the Program and Documentation, unused, to The MathWorks, Inc.

Trademarks

MATLAB and Simulink are registered trademarks of The MathWorks, Inc. See www.mathworks.com/trademarks for a list of additional trademarks. Other product or brand names may be trademarks or registered trademarks of their respective holders.

Patents

MathWorks products are protected by one or more U.S. patents. Please see www.mathworks.com/patents for more information.

Summary by Version	1
Version 8.0 (R2011b) Stateflow Software	5
Version 7.7 (R2011a) Stateflow Software	12
Version 7.6.1 (R2010bSP1) Stateflow and Stateflow Coder Software	24
Version 7.6 (R2010b) Stateflow and Stateflow Coder Software	25
Version 7.5 (R2010a) Stateflow and Stateflow Coder Software	30
Version 7.4.1 (R2009bSP1) Stateflow and Stateflow Coder Software	38
Version 7.4 (R2009b) Stateflow and Stateflow Coder Software	39
Version 7.3 (R2009a) Stateflow and Stateflow Coder Software	46
Version 7.2 (R2008b) Stateflow and Stateflow Coder Software	52
Version 7.1.1 (R2008a+) Stateflow and Stateflow Coder Software	93
Version 7.1 (R2008a) Stateflow and Stateflow Coder Software	94

Version 7.0.1 (R2007b+) Stateflow and Stateflow Coder Software	101
Version 7.0 (R2007b) Stateflow and Stateflow Coder Software	102
Version 6.6.1 (R2007a+) Stateflow and Stateflow Coder Software	108
Version 6.6 (R2007a) Stateflow and Stateflow Coder Software	109
Version 6.5 (R2006b) Stateflow and Stateflow Coder Software	110
Version 6.4.1 (R2006a+) Stateflow and Stateflow Coder Software	111
Version 6.4 (R2006a) Stateflow and Stateflow Coder Software	112
Version 6.3 (R14SP3) Stateflow and Stateflow Coder Software	114
Version 6.2 (R14SP2) Stateflow and Stateflow Coder Software	122
Version 6.1 (R14SP1) Stateflow and Stateflow Coder Software	124
Version 6.0 (R14) Stateflow and Stateflow Coder Software	125
Version 5.1.1 (R13SP1) Stateflow and Stateflow Coder Software	138
Version 5.1 (R13+) Stateflow and Stateflow Coder Software	140

Version 5.0 (R13) Stateflow and Stateflow Coder	
Software	142
Version 4.1 (R12.1) Stateflow and Stateflow Coder	
Software	148
Version 4.0 (R12) Stateflow and Stateflow Coder	
Software	153
Version 3.0 (R11) Stateflow and Stateflow Coder	
Software	155
Compatibility Summary for Stateflow Software	159

Summary by Version

This table provides quick access to what's new in each version. For clarification, see "Using Release Notes" on page 3.

Version (Release)	New Features and Changes	Version Compatibility Considerations	Fixed Bugs and Known Problems
Latest version V8.0 (R2011b)	Yes Details	Yes Summary	Bug Reports Includes fixes
V7.7 (R2011a)	Yes Details	Yes Summary	Bug Reports Includes fixes
V7.6.1 (R2010bSP1)	No	No	Bug Reports Includes fixes
V7.6 (R2010b)	Yes Details	Yes Summary	Bug Reports Includes fixes
V7.5 (R2010a)	Yes Details	Yes Summary	Bug Reports Includes fixes
V7.4.1 (R2009bSP1)	No	No	Bug Reports Includes fixes
V7.4 (R2009b)	Yes Details	Yes Summary	Bug Reports Includes fixes
V7.3 (R2009a)	Yes Details	Yes Summary	Bug Reports Includes fixes
V7.2 (R2008b)	Yes Details	Yes Summary	Bug Reports Includes fixes
V7.1.1 (R2008a+)	No	No	Bug Reports Includes fixes
V7.1 (R2008a)	Yes Details	Yes Summary	Bug Reports Includes fixes
V7.0.1 (R2007b+)	No	No	Bug Reports Includes fixes
V7.0 (R2007b)	Yes Details	Yes Summary	Bug Reports Includes fixes

Version (Release)	New Features and Changes	Version Compatibility Considerations	Fixed Bugs and Known Problems
V6.6.1 (R2007a+)	No	No	Bug Reports Includes fixes
V6.6 (R2007a)	Yes Details	No	Bug Reports Includes fixes
V6.5 (R2006b)	Yes Details	No	Bug Reports Includes fixes
V6.4.1 (R2006a+)	No	No	Bug Reports at Web site
V6.4 (R2006a)	Yes Details	No	Bug Reports at Web site
V6.3 (R14SP3)	Yes Details	No	Bug Reports at Web site
V6.2 (R14SP2)	Yes Details	No	Bug Reports at Web site
V6.1 (R14SP1)	Yes Details	No	Bug reports not available
V6.0 (R14)	Yes Details	Yes Summary	“Bug Fixes” on page 136
V5.1.1 (R13SP1)	Yes Details	Yes Summary	No
V5.1 (R13+)	Yes Details	No	Bug reports not available
V5.0 (R13)	Yes Details	Yes Summary	Bug reports not available
V4.1 (R12.1)	Yes Details	Yes Summary	“Bug Fixes” on page 150
V4.0 (R12)	Yes Details	Yes Summary	No
V3.0 (R11)	Yes Details	No	No

Using Release Notes

Use release notes when upgrading to a newer version to learn about:

- New features
- Changes
- Potential impact on your existing files and practices

Review the release notes for other MathWorks® products required for this product (for example, MATLAB® or Simulink®). Determine if enhancements, bugs, or compatibility considerations in other products impact you.

If you are upgrading from a software version other than the most recent one, review the current release notes and all interim versions. For example, when you upgrade from V1.0 to V1.2, review the release notes for V1.1 and V1.2.

What Is in the Release Notes

New Features and Changes

- New functionality
- Changes to existing functionality

Version Compatibility Considerations

When a new feature or change introduces a reported incompatibility between versions, the **Compatibility Considerations** subsection explains the impact.

Compatibility issues reported after the product release appear under Bug Reports at the MathWorks Web site. Bug fixes can sometimes result in incompatibilities, so review the fixed bugs in Bug Reports for any compatibility impact.

Fixed Bugs and Known Problems

MathWorks offers a user-searchable Bug Reports database so you can view Bug Reports. The development team updates this database at release time

and as more information becomes available. Bug Reports include provisions for any known workarounds or file replacements. Information is available for bugs existing in or fixed in Release 14SP2 or later. Information is not available for all bugs in earlier releases.

Access Bug Reports using your MathWorks Account.

Documentation on the MathWorks Web Site

Related documentation is available on mathworks.com for the latest release and for previous releases:

- Latest product documentation
- Archived documentation

Version 8.0 (R2011b) Stateflow Software

This table summarizes what's new in V8.0 (R2011b):

New Features and Changes	Version Compatibility Considerations	Fixed Bugs and Known Problems
Yes Details below	Yes—Details labeled as Compatibility Considerations , below. See also Summary.	Bug Reports Includes fixes

New features and changes introduced in this version are:

- “Control of Diagnostic for Multiple Unconditional Transitions from the Same Source” on page 5
- “New Chart Property That Specifies Behavior for Integer Overflow” on page 7
- “Control of Default Case Generation for Switch-Case Statements” on page 8
- “Earlier Detection of State Inconsistency Errors” on page 9
- “Restriction on Output Initialization Lifted for Mealy and Moore Charts” on page 10
- “Support for Editing Block Masks of Chart and Truth Table Blocks” on page 10
- “Removal of Coverage Tab from the Stateflow Debugger” on page 10

Control of Diagnostic for Multiple Unconditional Transitions from the Same Source

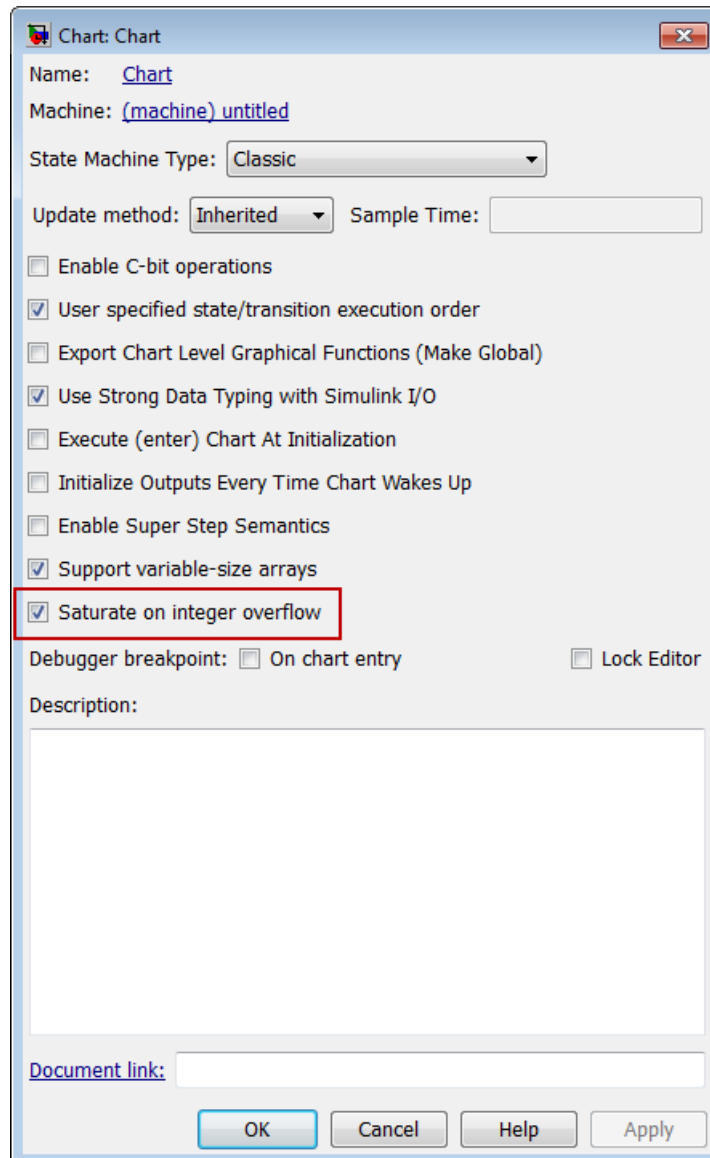
You can control the behavior of the Stateflow® diagnostic that detects multiple unconditional transitions from the same state or the same junction. Set **Transition shadowing** to none, warning, or error on the **Diagnostics > Stateflow** pane of the Configuration Parameters dialog box.

Stateflow	
Unused data and events:	warning ▼
Unexpected backtracking:	warning ▼
Invalid input data access in chart initialization:	warning ▼
No unconditional default transitions:	warning ▼
Transition outside natural parent:	warning ▼
Transition shadowing:	warning ▼

For more information, see “Diagnostics Pane: Stateflow” in the *Simulink Graphical User Interface* documentation.

New Chart Property That Specifies Behavior for Integer Overflow

A new chart property **Saturate on integer overflow** enables you to control the behavior of data with signed integer types when overflow occurs:



Check Box	Rationale for This Setting	What Happens for Overflows	Example
Selected	Overflow is possible for data in your chart and you want explicit saturation protection in the generated code.	Overflows saturate to either the minimum or maximum value that the data type can represent.	An overflow associated with a signed 8-bit integer saturates to -128 or 127 .
Cleared	You want to optimize efficiency of the generated code.	The behavior is dependent on the C compiler used for generating code.	The number 130 does not fit in a signed 8-bit integer and wraps to -126 .

Arithmetic operations for which you can enable saturation protection are:

- Unary minus: a
- Binary operations: $a + b$, $a - b$, $a * b$, a / b , $a ^ b$
- Assignment operations: $a += b$, $a = b$, $a *= b$, $a /= b$

For new charts, this check box is selected by default. When you open charts saved in previous releases, the check box is cleared to maintain backward compatibility.

For more information, see “Specifying Chart Properties” in the *Stateflow User’s Guide*

Control of Default Case Generation for Switch-Case Statements

You can specify whether or not to always generate default cases for switch-case statements. Use the following check box on the **Code Generation > Code Style** pane of the Configuration Parameters dialog box:

Code Style

Parentheses level: Nominal (Optimize for readability)

Preserve operand order in expression

Preserve condition expression in if statement

Convert if-else-if-else patterns to switch-case statements

Preserve extern keyword in function declarations

Suppress generation of default cases for Stateflow switch statements if unreachable

Check Box	Rationale for This Setting	Format of Switch-Case Statements
Selected	Provide better code coverage.	Exclude the default case when it is unreachable.
Cleared	Ensure MISRA C® compliance.	Always include a default case.

This readability optimization is available for embedded real-time (ERT) targets. For new models, this check box is cleared by default. When you open models saved in previous releases, the check box is cleared to maintain backward compatibility.

For more information, see “Code Generation Pane: Code Style” in the *Embedded Coder™ Reference* documentation.

Earlier Detection of State Inconsistency Errors

In R2011b, models with Stateflow charts produce an error at compile time when the following conditions are all true:

- A transition leads to a state that has exclusive (OR) decomposition and multiple substates. There are no default paths that lead to the entry of any substate. This condition results in a state inconsistency error. (However, if all transitions into that state are supertransitions leading directly to the substates, there is no error.)

- The state with multiple substates does not contain a history junction.

This enhancement enables you to detect state inconsistency errors earlier in the model development process. For example, the error appears when you perform an update diagram.

Compatibility Considerations

In previous releases, state inconsistency errors did not occur until run time.

Restriction on Output Initialization Lifted for Mealy and Moore Charts

In previous releases, Mealy and Moore charts automatically applied the initial value of outputs every time the chart woke up. Both chart types ensured that outputs did not depend on previous values of outputs by enforcing the chart property **Initialize Outputs Every Time Chart Wakes Up**.

In R2011b, this restriction has been lifted. You can now choose whether or not to initialize outputs every time a Mealy or Moore chart wakes up. If you disable this chart property, you enable latching of outputs (carrying over output values computed in previous time steps).

Support for Editing Block Masks of Chart and Truth Table Blocks

In R2011b, you can edit the block mask of Chart and Truth Table blocks.

Compatibility Considerations

In R2011b, scripts that use the `MaskType` property no longer work.

Removal of Coverage Tab from the Stateflow Debugger

In R2011b, the **Coverage** tab of the Stateflow debugger has been removed. In previous releases, clicking the **Coverage** tab would show the following message:

Coverage feature obsoleted. Please use Simulink Verification and Validation in order to get complete coverage of Simulink/Stateflow objects.

Version 7.7 (R2011a) Stateflow Software

This table summarizes what's new in V7.7 (R2011a):

New Features and Changes	Version Compatibility Considerations	Fixed Bugs and Known Problems
Yes Details below	Yes—Details labeled as Compatibility Considerations , below. See also Summary.	Bug Reports Includes fixes

New features and changes introduced in this version are:

- “Migration of Stateflow Coder Features to New Product” on page 13
- “Embedded MATLAB Functions Renamed as MATLAB Functions in Stateflow Charts” on page 13
- “Use of MATLAB Expressions to Specify Data Size” on page 14
- “Ability to Change Data Values While Debugging” on page 15
- “Ability to Debug a Single Chart When Multiple Charts Exist in a Model” on page 16
- “Support for Input Events in Atomic Subcharts” on page 17
- “Control of Generated Function Names for Atomic Subcharts” on page 17
- “Enhanced Data Sorting in the Stateflow Debugger” on page 18
- “Option to Maintain Highlighting of Active States After Simulation” on page 19
- “Right-Click Options for Setting Local Breakpoints” on page 20
- “New Signal Logging Format That Simplifies Access to States and Local Data” on page 20
- “Support for Buses in Data Store Memory” on page 21
- “Enhanced Readability of State Functions” on page 21
- “Support for Arrays of Buses as Inputs and Outputs of Charts and Functions” on page 21

- “Default Setting of ‘States When Enabling’ Chart Property Now Held” on page 21
- “Initial Value Vectors with Fixed-Point or Enumerated Values Now Evaluate Correctly” on page 22
- “Mac Screen Menubar Disabled When Stateflow Is Installed” on page 22

Migration of Stateflow Coder Features to New Product

In R2011a, all functionality previously available for the Stateflow Coder™ product is now part of the new Simulink® Coder™ product.

Embedded MATLAB Functions Renamed as MATLAB Functions in Stateflow Charts

In R2011a, Embedded MATLAB functions have been renamed as MATLAB functions in Stateflow charts. This name change has the following effects:

- The function box now shows MATLAB Function instead of eM in the upper-left corner.
- Traceability comments in the generated code for embedded real-time targets now use MATLAB Function instead of Embedded MATLAB Function.
- For truth table functions in your chart, the **Settings > Language** menu now provides Stateflow Classic and MATLAB as the choices.

Scripts that use the `Stateflow.EMFunction` constructor method continue to work. All properties and methods for this object remain the same.

Use of MATLAB Expressions to Specify Data Size

In R2011a, you can enter MATLAB expressions in the **Size** field of the Data properties dialog box:

The screenshot shows the 'Data airflow' dialog box with the 'General' tab selected. The 'Name' field is 'airflow', 'Scope' is 'Output', and 'Port' is '1'. The 'Size' field is highlighted with a red box and contains the MATLAB expression 'N+2'. Other fields include 'Complexity' set to 'Off', 'Type' set to 'uint8', and 'Initial value' set to 'Expression'. There are also checkboxes for 'Data must resolve to Simulink signal object', 'Lock data type setting against changes by the fixed-point tools', 'Test point', and 'Watch in debugger'.

This enhancement enables you to use additional constructs, such as:

- Variables in the MATLAB base workspace
- Enumerated values on the MATLAB search path
- Expressions that use `fi` objects

For more information, see “Sizing Stateflow Data” in the *Stateflow User’s Guide*.

Compatibility Considerations

For the **Size** field, name conflict resolution works differently from previous releases. In R2011a, when multiple variables with identical names exist, the variable with the highest priority is used:

- 1** Mask parameters
- 2** Model workspace
- 3** MATLAB base workspace
- 4** Stateflow data

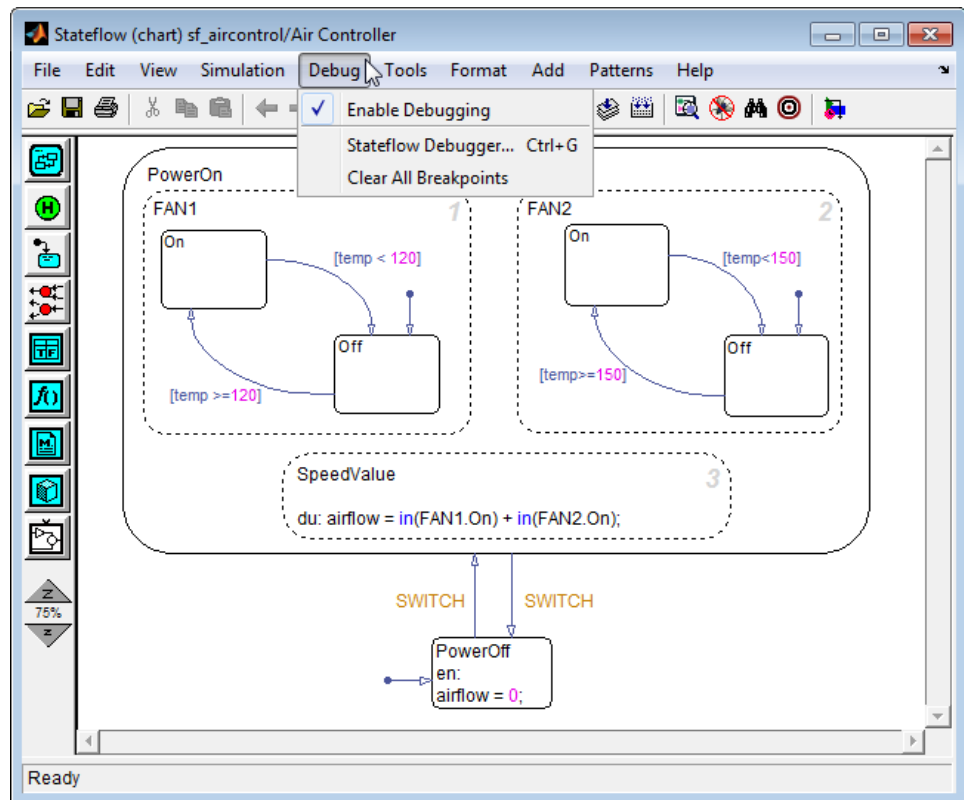
In previous releases, Stateflow data took precedence over all other variables with identical names.

Ability to Change Data Values While Debugging

Previously, you could not change the values of Stateflow data while debugging a chart. Now you can change data values while the chart is in debug mode and see how simulation results change. For more information, see “Changing Data Values During Simulation” in the *Stateflow User’s Guide*.

Ability to Debug a Single Chart When Multiple Charts Exist in a Model

When **Enable debugging/animation** is enabled on the **Simulation Target** pane of the Configuration Parameters dialog box, this setting applies to all charts in your model. In R2011a, you can enable or disable debugging on a chart-by-chart basis, using the **Debug** menu in the Stateflow Editor:



This enhancement enables you to focus on debugging a single chart, instead of having to debug all charts in the model. For details, see “How to Enable Debugging for Charts” in the *Stateflow User’s Guide*.

You can also clear all breakpoints for a specific chart by selecting **Debug > Clear All Breakpoints** in the Stateflow Editor. For more information, see “Clearing All Breakpoints” in the *Stateflow User’s Guide*.

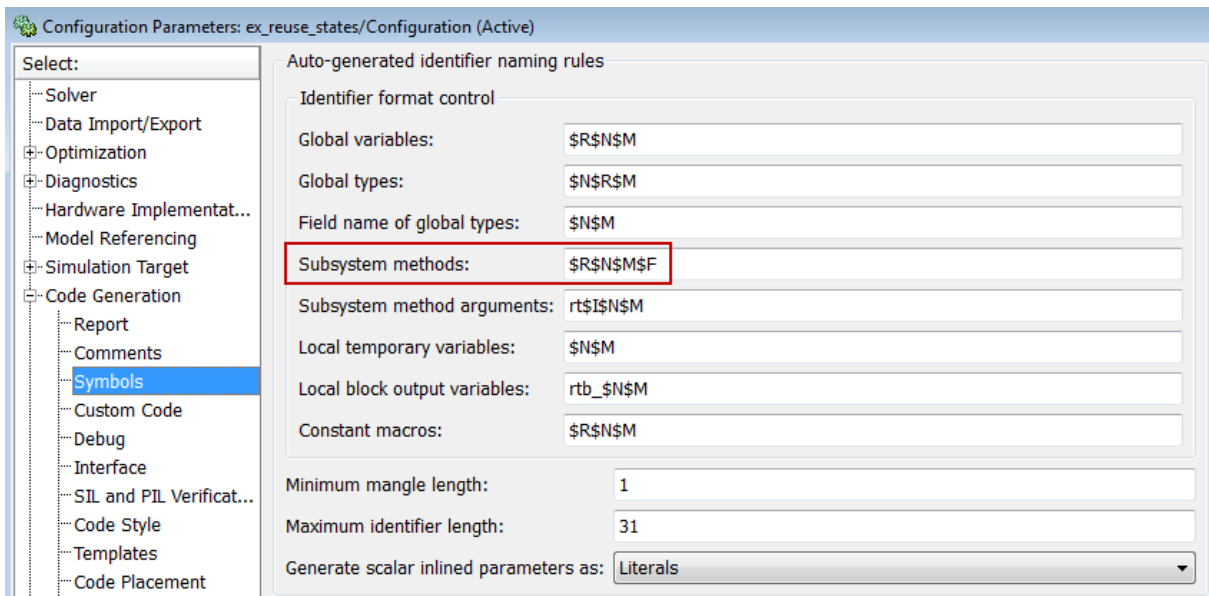
In previous releases, you could open the debugger by selecting **Tools > Debug** in the Stateflow Editor. In R2011a, this menu option has moved to **Debug > Stateflow Debugger**.

Support for Input Events in Atomic Subcharts

In R2011a, you can use input events in atomic subcharts. For more information, see “Making States Reusable with Atomic Subcharts” in the *Stateflow User’s Guide*.

Control of Generated Function Names for Atomic Subcharts

In R2011a, the generated function names for atomic subcharts follow the identifier naming rules for subsystem methods on the **Code Generation > Symbols** pane of the Configuration Parameters dialog box:



This enhancement enables you to control the format of generated function names for atomic subcharts when building an embedded real-time (ERT) target. For more information, see “Generating Reusable Code for Unit Testing” in the *Stateflow User’s Guide*.

Enhanced Data Sorting in the Stateflow Debugger

In previous releases, the Stateflow debugger sorted data by scope first, before alphabetically listing data. In R2011a, the debugger sorts data alphabetically in the **Browse Data** section, without regard to scope. This enhancement helps you find specific data quickly when your chart contains many variables, for example, over a hundred.

Data sorting depends solely on the variable name and not on hierarchy. For example, if you have chart-parented data named `arrayOut` and state-parented data named `arrayData`, the list that appears in the **Browse Data** section is:

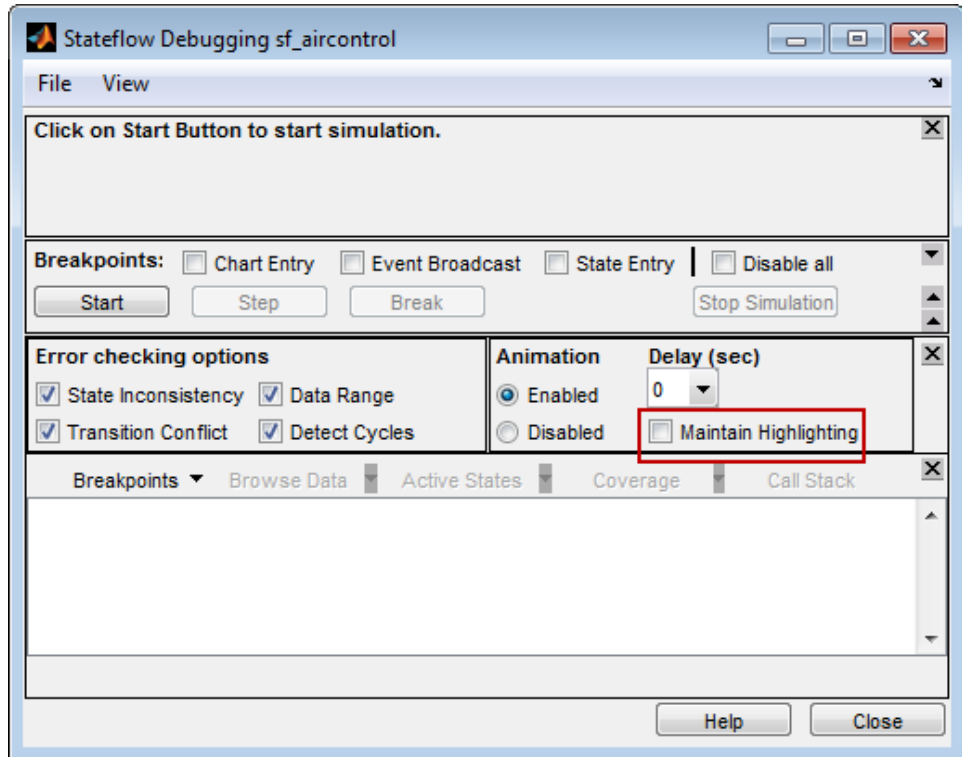
```
S.arrayData  
arrayOut
```

The state name has no effect on data sorting.

For more information, see “Watching Data Values During Simulation” in the *Stateflow User’s Guide*.

Option to Maintain Highlighting of Active States After Simulation

In R2011a, you can highlight the states that are active at the end of a simulation by selecting **Maintain Highlighting** in the Stateflow debugger.



This enhancement enables you to inspect the active states of a chart after simulation ends, without having to use the `SimState` method `highlightActiveStates`. For more information, see “Animating Stateflow Charts” in the *Stateflow User’s Guide*.

Right-Click Options for Setting Local Breakpoints

For graphical chart objects, you can now right-click the object to set local breakpoints. This enhancement enables you to set breakpoints more quickly, without having to open the properties dialog box for:

- Charts
- States
- Transitions
- Graphical functions
- Truth table functions

For more information, see “Setting Local Breakpoints” in the *Stateflow User’s Guide*.

New Signal Logging Format That Simplifies Access to States and Local Data

You can now select a format for signal logging data. Use the **Signal logging format** parameter on the **Data Import/Export** pane of the Configuration Parameters dialog box to specify the format:

- `ModelDataLogs` — `Simulink.ModelDataLogs` format (the default; before R2011a, it was the only supported format)
- `Dataset` — `Simulink.Simulation.Dataset` format (new in R2011a)

The `Dataset` format:

- Supports logging multiple data values for a given time step, which enhances signal logging of Stateflow data
- Uses MATLAB `timeseries` objects to store logged data (rather than `Simulink.Timeseries` and `Simulink.TsArray` objects), which enables you to work with logged data in MATLAB without a Simulink license
- Avoids the limitations of the `ModelDataLogs` format, which Bug Report 495436 describes

For more information, see “Logging Data Values and State Activity”.

Compatibility Considerations

In previous releases, selecting **Enable debugging/animation** on the **Simulation Target** pane of the Configuration Parameters dialog box would implicitly set all data and states in a Stateflow chart to be test points. In R2011a, you must select the **Test point** check box explicitly for data and states to appear in the Signal Selector dialog box of a Scope or Floating Scope block.

If you load models from previous releases that rely on the implicit behavior, mark the appropriate data or states as test points to ensure that they appear in the Signal Selector dialog box. For more information, see “Monitoring Test Points in Stateflow Charts” in the *Stateflow User’s Guide*.

Support for Buses in Data Store Memory

You can now use buses, but not arrays of buses, as shared data in Stateflow data store memory.

Enhanced Readability of State Functions

In R2011a, state functions are more readable due to improved inlining heuristics.

Support for Arrays of Buses as Inputs and Outputs of Charts and Functions

In R2011a, you can pass arrays of buses as inputs and outputs of the following Stateflow objects:

- Charts
- MATLAB functions
- Simulink functions

Default Setting of ‘States When Enabling’ Chart Property Now Held

For new charts, the default setting of the **States When Enabling** chart property is **Held**. In previous releases, the default setting was **Inherit**.

For more information, see “Controlling States When Function-Call Inputs Reenable Charts” in the *Stateflow User’s Guide*.

Initial Value Vectors with Fixed-Point or Enumerated Values Now Evaluate Correctly

In previous releases, if you set an initial value vector using fixed-point or enumerated values, all elements of that vector would have the same value as the first element. For example:

For this initial value vector...	The chart used these values...
[fi(1,1,16,0) fi(2,1,16,0)]	[1 1], instead of [1 2]
[Colors.Red Colors.Yellow Colors.Green]	[Colors.Red Colors.Red Colors.Red], instead of [Colors.Red Colors.Yellow Colors.Green]

In R2011a, this bug has been fixed.

Compatibility Considerations

If you have any models that rely on the behavior of initial value vectors from previous releases, these models will behave differently in R2011a.

Mac Screen Menubar Disabled When Stateflow Is Installed

In R2011a, the Mac screen menubar is disabled when a Stateflow license is present. This behavior enables Stateflow Editor menu options to work normally on a Mac.

To enable the Mac screen menubar, you can modify the `java.opts` file by adding the following line:

```
-Dapple.laf.useScreenMenuBar=true
```

That line instructs Java to enable the Mac screen menubar.

A `java.opts` file can reside in the folder from which you launch MATLAB or in the `bin/maci64` subfolder within the MATLAB root folder. A `java.opts` file in the latter location applies to all users, but individual users might not have permissions to modify a `java.opts` file there. If there is a `java.opts` file in both locations with settings that conflict, the setting in the `java.opts` file in the folder from which you launch MATLAB takes precedence. You might want to check both locations to see whether you have existing `java.opts` files and then decide which one to modify.

- To create a new `java.opts` file or modify an existing copy in the folder from which you launch MATLAB:

- 1** Quit MATLAB.

- 2** Relaunch MATLAB and immediately enter the following line in the Command Window:

```
edit java.opts
```

- To create or modify a `java.opts` file that applies to all users, you can enter the following line in the MATLAB Command Window at any time:

```
edit(fullfile(matlabroot, 'bin', 'maci64', 'java.opts'))
```

Version 7.6.1 (R2010bSP1) Stateflow and Stateflow Coder Software

This table summarizes what's new in V7.6.1 (R2010bSP1):

New Features and Changes	Version Compatibility Considerations	Fixed Bugs and Known Problems
No	No	Bug Reports Includes fixes

Version 7.6 (R2010b) Stateflow and Stateflow Coder Software

This table summarizes what's new in V7.6 (R2010b):

New Features and Changes	Version Compatibility Considerations	Fixed Bugs and Known Problems
Yes Details below	Yes—Details labeled as Compatibility Considerations , below. See also Summary.	Bug Reports Includes fixes

New features and changes introduced in this version are:

- “New Atomic Subcharts to Create Reusable States for Large-Scale Modeling” on page 26
- “Stateflow Library Charts Now Support Instances with Different Data Sizes, Types, and Complexities” on page 26
- “Support for Controlling Stateflow Diagnostics in the Configuration Parameters Dialog Box” on page 26
- “Enhanced Custom-Code Parsing to Improve Reporting of Unresolved Symbols” on page 27
- “Temporal Logic Conditions Can Now Guard Transitions Originating from Junctions” on page 27
- “Data Dialog Box Enhancements” on page 28
- “Branching of Function-Call Output Events No Longer Requires Binding of Event to a State” on page 28
- “Passing Real Values to Function Inputs of Complex Type Disallowed” on page 28
- “Using Chart Block That Accesses Global Data in For Each Subsystem Disallowed” on page 29
- “New and Enhanced Demos” on page 29

New Atomic Subcharts to Create Reusable States for Large-Scale Modeling

In R2010b, you can use atomic subcharts to:

- Break up a chart into standalone parts to facilitate team development
- Reuse states across multiple charts and models
- Animate and debug multiple charts side-by-side during simulation
- Use simulation to test changes, one-by-one, without recompiling the entire chart
- Generate reusable code for specific states or subcharts to enhance unit testing

For more information, see “Making States Reusable with Atomic Subcharts” in the *Stateflow User’s Guide*.

Stateflow Library Charts Now Support Instances with Different Data Sizes, Types, and Complexities

In R2010b, you can use library link charts that specify different data sizes, types, and complexities. Previously, all library charts had to use the same settings for data size, type, and complexity. For more information, see “Creating Specialized Chart Libraries for Large-Scale Modeling” in the *Stateflow User’s Guide*.

Support for Controlling Stateflow Diagnostics in the Configuration Parameters Dialog Box

In R2010b, you can control the behavior of the following Stateflow diagnostics in the **Diagnostics > Stateflow** pane of the Configuration Parameters dialog box:

- Unused data and events
- Unexpected backtracking
- Invalid input data access in chart initialization
- No unconditional default transitions

- Transition outside natural parent

For more information, see “Diagnostics Pane: Stateflow” in the *Simulink Graphical User Interface*.

Enhanced Custom-Code Parsing to Improve Reporting of Unresolved Symbols

In R2010b, you can resolve symbols in your chart to symbols defined in custom code while parsing the chart. This enhancement enables more accurate and earlier reporting of unresolved symbols. Previously, the parser assumed that any unresolved chart symbols were defined in custom code. You could not resolve chart symbols to symbols in your custom code until make time. If the chart symbols were undefined in the custom code, a make error would appear.

Also, the Symbol Autocreation Wizard was previously available only for 32-bit Windows® platforms that use lcc for the mex compiler. In R2010b, the Symbol Autocreation Wizard is available to help you fix unresolved symbols, regardless of the compiler or platform.

To enable or disable custom-code parsing, you can use the **Parse custom code symbols** check box on the **Simulation Target > Custom Code** pane of the Configuration Parameters dialog box.

For more information, see:

- “Parse custom code symbols” in the *Simulink Graphical User Interface*
- “Resolving Event, Data, and Function Symbols in Stateflow Action Language” in the *Stateflow User’s Guide*

Temporal Logic Conditions Can Now Guard Transitions Originating from Junctions

Previously, you could not use temporal logic conditions on transitions that originated from junctions. Now you can use temporal logic conditions on transitions from junctions as long as the full transition path connects two states. For more information, see “Rules for Using Temporal Logic Operators” and “Example of Detecting Elapsed Time” in the *Stateflow User’s Guide*.

Data Dialog Box Enhancements

In R2010b, the following changes to the Data properties dialog box apply:

Parameters	Location in R2010a	Location in R2010b	Benefit of Location Change
<ul style="list-style-type: none"> • Initial value • Minimum • Maximum 	Value Attributes tab	General tab	Consistent with blocks in the Simulink library that specify these parameters on the same tab as the data type.
<ul style="list-style-type: none"> • Test point • Watch in debugger 	Value Attributes tab	General tab	Increases visibility of commonly used parameters.
<ul style="list-style-type: none"> • Save final value to base workspace • First index • Units 	Value Attributes tab	Description tab	Consolidates parameters related to the data description.

Branching of Function-Call Output Events No Longer Requires Binding of Event to a State

Previously, using a Function-Call Split block to branch a function-call output event from a chart to separate subsystems required binding of the event to a state. In R2010b, binding is no longer required.

Passing Real Values to Function Inputs of Complex Type Disallowed

In R2010b, you cannot pass real values to function inputs of complex type. This restriction applies to the following types of chart functions:

- Graphical functions
- Truth table functions
- Embedded MATLAB® functions
- Simulink functions

Compatibility Considerations

If you have existing models that pass real values to function inputs of complex type, an error now appears when you try to simulate your model.

Using Chart Block That Accesses Global Data in For Each Subsystem Disallowed

In R2010b, the following model configuration produces an error during Real-Time Workshop® code generation:

- A Chart block resides in a For Each Subsystem.
- The Chart block tries to access global data from Data Store Memory blocks.

New and Enhanced Demos

The following demos have been added in R2010b:

Demo...	Shows how you can...
sf_atomic_sensor_pair	Model a redundant sensor pair using atomic subcharts
sf_electrohydraulic	Model a servo mechanism for use in electrohydraulic systems

The following demo has been enhanced in R2010b:

Demo...	Now...
sf_elevator	Models an elevator system with two identical lifts using atomic subcharts

Version 7.5 (R2010a) Stateflow and Stateflow Coder Software

This table summarizes what's new in V7.5 (R2010a):

New Features and Changes	Version Compatibility Considerations	Fixed Bugs and Known Problems
Yes Details below	Yes—Details labeled as Compatibility Considerations , below. See also Summary.	Bug Reports Includes fixes

New features and changes introduced in this version are:

- “Support for Combining Actions in State Labels” on page 31
- “New Diagnostic Detects Unused Data and Events” on page 31
- “Enhanced Support for Variable-Size Chart Inputs and Outputs” on page 32
- “Support for Chart-Level Data with Fixed-Point Word Lengths Up to 128 Bits” on page 32
- “New ‘States When Enabling’ Property for Charts with Function-Call Input Events” on page 33
- “Support for Tunable Structures of Parameter Scope in Charts” on page 33
- “Enhanced Real-Time Workshop Code Generation for Noninlined State Functions” on page 33
- “Enhanced Real-Time Workshop Code Generation for sizeof Function” on page 34
- “Enhanced Real-Time Workshop Code Generation for Custom-Code Function Calls” on page 34
- “Data Change Implicit Event No Longer Supports Machine-Parented Data” on page 35
- “Support for Machine-Parented Events Completely Removed” on page 35
- “MEX Compilation with Microsoft® Visual Studio .NET 2003 No Longer Supported” on page 36

- “Code Generation Status Messages No Longer Shown in Command Window” on page 36
- “Change in Behavior for Appearance of Optimization Parameters” on page 36
- “Enhanced Inlining of Generated Code That Calls Subfunctions” on page 37
- “Check Box for ‘Treat as atomic unit’ Now Always Selected” on page 37
- “New Demos” on page 37

Support for Combining Actions in State Labels

You can now combine entry, during, and exit actions in a single line on state labels. This concise syntax provides enhanced readability for your chart and helps eliminate redundant code. For more information, see “Combining State Actions to Eliminate Redundant Code” in the *Stateflow User’s Guide*.

New Diagnostic Detects Unused Data and Events

A new diagnostic now detects unused Stateflow data and events during simulation. A warning message appears, alerting you to data and events that you can remove. This enhancement helps you reduce the size of your model by removing objects that have no effect on simulation.

This diagnostic checks for usage of Stateflow data, except for the following types:

- Machine-parented data
- Inputs and outputs of Embedded MATLAB functions

This diagnostic checks for usage of Stateflow events, except for the following type:

- Input events

For more information, see “Diagnostic for Detecting Unused Data” and “Diagnostic for Detecting Unused Events” in the *Stateflow User’s Guide*.

Enhanced Support for Variable-Size Chart Inputs and Outputs

You can explicitly pass variable-size chart inputs and outputs as inputs and outputs of the following functions:

- Embedded MATLAB functions
- Simulink functions
- Truth table functions that use Embedded MATLAB action language

For more information, see “Using Variable-Size Data in Stateflow Charts” in the *Stateflow User’s Guide*.

Support for Chart-Level Data with Fixed-Point Word Lengths Up to 128 Bits

Chart-level data now support up to 128 bits of fixed-point precision for the following scopes:

- Input
- Output
- Parameter
- Data Store Memory

This increase in maximum precision from 32 to 128 bits provides these enhancements:

- Supports generating efficient code for targets with non-standard word sizes
- Allows charts to work with large fixed-point signals

You can explicitly pass chart-level data with these fixed-point word lengths as inputs and outputs of the following functions:

- Embedded MATLAB functions
- Simulink functions
- Truth table functions that use Embedded MATLAB action language

For more information, see “Using Fixed-Point Data in Stateflow Charts” in the *Stateflow User’s Guide*.

New ‘States When Enabling’ Property for Charts with Function-Call Input Events

The new chart property **States When Enabling** helps you specify how states behave when a function-call input event reenables a chart. You can select one of the following settings in the Chart properties dialog box:

- **Held** — Maintain most recent values of the states.
- **Reset** — Revert to the initial conditions of the states.
- **Inherit** — Inherit this setting from the parent subsystem.

This enhancement helps you more accurately control the behavior of a chart with a function-call input event. For more information, see “Controlling States When Function-Call Inputs Reenable Charts” and “Setting Properties for a Single Chart” in the *Stateflow User’s Guide*.

Support for Tunable Structures of Parameter Scope in Charts

You can now define structures of parameter scope that are tunable. For more information, see “Defining Structures of Parameter Scope” in the *Stateflow User’s Guide*.

Enhanced Real-Time Workshop Code Generation for Noninlined State Functions

If you prevent inlining for a state, Real-Time Workshop generated code contains a new static function `inner_default_statename` when:

- Your chart contains a flow graph where an inner transition and default transition reach the same junction inside a state.
- This flow graph is complex enough to exceed the inlining threshold.

For more information, see “What Happens When You Prevent Inlining” in the *Stateflow User’s Guide*.

Enhanced Real-Time Workshop Code Generation for sizeof Function

When you use the `sizeof` function in generated code to determine vector or matrix dimensions, `sizeof` always takes an input argument that evaluates to a data type.

Behavior in Prior Releases	Behavior in R2010a	Benefits of Change in Code
Input argument references the address of the variable, for example: <pre>sizeof(&a[0])</pre>	Input argument evaluates to the data type of the variable, for example: <pre>sizeof(uint8_T [256])</pre>	Ensures consistent results between simulation and code generation.

Enhanced Real-Time Workshop Code Generation for Custom-Code Function Calls

When you use custom-code function calls in generated code, vector and matrix input arguments always use pass-by-reference instead of pass-by-value behavior.

Behavior in Prior Releases	Behavior in R2010a	Benefits of Change in Code
Custom-code function calls might use either pass-by-reference or pass-by-value. For pass-by-value, a <code>memcpy</code> operation creates and stores a temporary variable in the generated code, for example: <pre>int t[10]; for (i=0; i<10; i++) { t[i] = y[i]; } fcn(t);</pre>	Custom-code function calls use pass-by-reference, for example: <pre>fcn(&y[0]);</pre>	<ul style="list-style-type: none"> • Ensures consistent results between simulation and code generation. • Less memory usage because a temporary variable is not necessary. • Faster execution of generated code because a <code>memcpy</code> operation is not necessary.

Data Change Implicit Event No Longer Supports Machine-Parented Data

The implicit event change (*data_name*) no longer works for machine-parented data. In R2010a, this implicit event works only with data at the chart level or lower in the hierarchy.

Compatibility Considerations

For machine-parented data, consider using change detection operators to determine when data values change. For more information, see “Using Change Detection in Actions” in the *Stateflow User’s Guide*.

Support for Machine-Parented Events Completely Removed

Support for machine-parented events has been completely removed. In R2010a, an error message appears when you try to simulate models that contain events at the machine level.

Compatibility Considerations

To prevent undesired behavior for simulation and code generation, do not use machine-parented events. For simulation, broadcasting an event to all charts in your model causes the following to occur:

- Charts wake up without regard to data dependencies.
- Charts that are disabled might wake up.
- Charts that use function-call or edge-triggered events wake up.
- Charts unrelated to the event wake up.
- Infinite recursive cycles can occur because the chart that broadcasts the event wakes up.

For code generation, machine-parented events prevent code reuse for the entire model.

MEX Compilation with Microsoft Visual Studio .NET 2003 No Longer Supported

Support for Microsoft® Visual Studio® .NET 2003 as a MEX compiler for simulation has been removed because MATLAB and Simulink no longer support this compiler. For information about alternative compilers, see “Choosing a Compiler” in the *Stateflow User’s Guide*.

Code Generation Status Messages No Longer Shown in Command Window

For Windows platforms, messages about Stateflow or Embedded MATLAB code generation and compilation status now appear only on the status bar of the Simulink Model Editor when you update diagram. Previously, these messages also appeared in the MATLAB Command Window. This enhancement minimizes distracting messages at the command prompt.

Change in Behavior for Appearance of Optimization Parameters

Previously, the Configuration Parameters dialog box showed the Stateflow section of the **Optimization** pane only when both of the following conditions were true:

- Real-Time Workshop and Stateflow licenses were available.
- Your model included Stateflow charts or Embedded MATLAB Function blocks.

In R2010a, the Configuration Parameters dialog box shows the Stateflow section of the **Optimization** pane when both licenses are available. Your model need not include any Stateflow charts or Embedded MATLAB Function blocks.

For a list of optimization parameters, see “Optimization Pane: General” in the *Simulink Graphical User Interface*.

Enhanced Inlining of Generated Code That Calls Subfunctions

In R2010a, Real-Time Workshop Embedded Coder software inlines generated code for Stateflow charts, even if the generated code calls a subfunction that accesses global Simulink data. This optimization uses less RAM and ROM.

Check Box for 'Treat as atomic unit' Now Always Selected

In existing models, simulation and code generation of Stateflow charts and Truth Table blocks always behave as if the **Treat as atomic unit** check box in the Subsystem Parameters dialog box is selected. Starting in R2010a, this check box is always selected for consistency with existing behavior.

New Demos

The following demos have been added in R2010a:

Demo...	Shows how you can...
sf_combined_state_actions	Combine entry and during actions in a single line on state labels
sf_variable_size_data	Pass variable-size data as an output of a Simulink function in a Stateflow chart
sf_multiword_fixpt	Pass multiword fixed-point data as an input and an output of a Simulink function in a Stateflow chart

Version 7.4.1 (R2009bSP1) Stateflow and Stateflow Coder Software

This table summarizes what's new in V7.4.1 (R2009bSP1):

New Features and Changes	Version Compatibility Considerations	Fixed Bugs and Known Problems
No	No	Bug Reports Includes fixes

Version 7.4 (R2009b) Stateflow and Stateflow Coder Software

This table summarizes what's new in V7.4 (R2009b):

New Features and Changes	Version Compatibility Considerations	Fixed Bugs and Known Problems
Yes Details below	Yes—Details labeled as Compatibility Considerations , below. See also Summary.	Bug Reports Includes fixes

New features and changes introduced in this version are:

- “Ability to Copy Simulink Function-Call Subsystems and Paste in Stateflow Editor as Simulink Functions, and Vice Versa” on page 40
- “Ability to Generate Switch-Case Statements for Flow Graphs and Embedded MATLAB Functions Using Real-Time Workshop Embedded Coder Software” on page 40
- “Support for Creating Switch-Case Flow Graphs Using the Pattern Wizard” on page 41
- “Support for Using More Than 254 Events in a Chart” on page 41
- “Improved Panning and Selection of States and Transitions When Using Stateflow Debugger” on page 41
- “Stateflow Compilation Status Added to Progress Indicator on Simulink Status Bar” on page 41
- “Support for Chart Inputs and Outputs That Vary in Dimension During Simulation” on page 42
- “New Compilation Report for Embedded MATLAB Functions in Stateflow Charts” on page 42
- “Enhanced Support for Replacing Math Functions with Target-Specific Implementations” on page 42
- “Enhanced Context Menu Support for Adding Flow Graph Patterns to Charts” on page 43

- “Option to Log Chart Signals Available in the Stateflow Editor” on page 43
- “Default Precision Set to Double for Calls to C Math Functions” on page 44
- “Change in Text and Visibility of Parameter Prompt for Easier Use with Fixed-Point Advisor and Fixed-Point Tool” on page 44
- “Charts Closed By Default When Opening Models Saved in Formats of Earlier Versions” on page 44
- “New and Enhanced Demos” on page 45

Ability to Copy Simulink Function-Call Subsystems and Paste in Stateflow Editor as Simulink Functions, and Vice Versa

You can copy a function-call subsystem from a model and paste directly in the Stateflow Editor. This enhancement eliminates the steps of manually creating a Simulink function in your chart and pasting the contents of the subsystem into the new function. You can also copy a Simulink function from a chart and paste directly in a model as a function-call subsystem.

For more information, see “Using Simulink Functions in Stateflow Charts” in the *Stateflow User’s Guide*.

Ability to Generate Switch-Case Statements for Flow Graphs and Embedded MATLAB Functions Using Real-Time Workshop Embedded Coder Software

If a flow graph or Embedded MATLAB function in your chart uses `if-elseif-else` decision logic, you can choose to generate switch-case statements during Real-Time Workshop Embedded Coder code generation. Switch-case statements provide more readable and efficient code than `if-elseif-else` statements when multiple decision branches are possible.

When you load models created in R2009a and earlier, this optimization is off to maintain backward compatibility. In previous versions, `if-elseif-else` logic appeared unchanged in generated code.

For more information, see:

- “Enhancing Readability of Generated Code for Flow Graphs”
- “Enhancing Readability of Generated Code for MATLAB Functions”
- “Code Generation Pane: Code Style”

Support for Creating Switch-Case Flow Graphs Using the Pattern Wizard

In the Pattern Wizard, you can now choose to create a flow graph with switch-case decision logic. For more information, see “Modeling Logic Patterns and Iterative Loops Using Flow Graphs” in the *Stateflow User’s Guide*.

Support for Using More Than 254 Events in a Chart

You can now use more than 254 events in a chart. The previous limit of 254 events no longer applies. This enhancement supports large-scale models with charts that send and receive hundreds of events during simulation. Although Stateflow software does not limit the number of events, the underlying C compiler enforces a theoretical limit of $(2^{31})-1$ events for the generated code.

For more information, see “Defining Events” in the *Stateflow User’s Guide*.

Improved Panning and Selection of States and Transitions When Using Stateflow Debugger

During single-step mode, the Stateflow Debugger no longer zooms automatically to the chart object that is executing. Instead, the debugger opens the subviewer that contains that object. This enhancement minimizes visual disruptions as you step through your analysis of a simulation.

For more information, see “Options to Control Execution Rate in the Debugger” in the *Stateflow User’s Guide*.

Stateflow Compilation Status Added to Progress Indicator on Simulink Status Bar

For Windows platforms, messages about Stateflow compilation status now appear on the status bar of the Simulink Model Editor when you update diagram.

Support for Chart Inputs and Outputs That Vary in Dimension During Simulation

Charts now support input and output data that vary in dimension during simulation. In this release, only Embedded MATLAB functions nested in the charts can manipulate these input and output data.

For more information, see “Using Variable-Size Data in Stateflow Charts” and “Working with Variable-Size Data in MATLAB Functions” in the *Stateflow User’s Guide*.

New Compilation Report for Embedded MATLAB Functions in Stateflow Charts

The new compilation report provides compile-time type information for the variables and expressions in your Embedded MATLAB functions. This information helps you find the sources of error messages and understand type propagation issues, particularly for fixed-point data types. For more information, see “Working with MATLAB Function Reports” in the *Simulink User’s Guide*.

Compatibility Considerations

The new compilation report is not supported by the MATLAB internal browser on Sun™ Solaris™ 64-bit platforms. To view the compilation report on Sun Solaris 64-bit platforms, you must have your MATLAB Web preferences configured to use an external browser, for example, Mozilla® Firefox®. To learn how to configure your MATLAB Web preferences, see Web Preferences in the MATLAB documentation.

Enhanced Support for Replacing Math Functions with Target-Specific Implementations

You can now replace the following math functions with target-specific implementations:

Function	Data Type Support
atan2	Floating-point
fmod	Floating-point

Function	Data Type Support
ldexp	Floating-point
max	Floating-point and integer
min	Floating-point and integer

Replacement of `abs` now works for both floating-point and integer arguments. Previously, replacement of `abs` with a target function worked only for floating-point arguments.

For more information about Target Function Libraries, see:

- “Replacement of C Math Library Functions with Target-Specific Implementations”
- “Replacing Operators with Target Functions”

Enhanced Context Menu Support for Adding Flow Graph Patterns to Charts

In a chart, you can now right-click at any level of the hierarchy (for example, states and subcharts) to insert flow graphs using the **Patterns** context menu. Previously, options in this context menu were available only if you right-clicked at the chart level.

Option to Log Chart Signals Available in the Stateflow Editor

To log chart signals, you can select **Tools > Log Chart Signals** in the Stateflow Editor. Previously, you had to right-click the Stateflow block in the Model Editor to open the Signal Logging dialog box.

For more information, see “What You Can Log During Chart Simulation” in the *Stateflow User’s Guide*.

Default Precision Set to Double for Calls to C Math Functions

When you call C math functions, such as `sin`, `exp`, or `pow`, double precision applies unless the first input argument is explicitly single precision. For example, if you call the `sin` function with an integer argument, a cast of the input argument to a floating-point number of type `double` replaces the original argument. This behavior ensures consistent results between Simulink blocks and Stateflow charts for calls to C math functions.

To force a call to a single-precision version of a C math function, you must explicitly cast the function argument using the `single` cast operator. This method works only when a single-precision version of the function exists in the selected Target Function Library as it would in the 'C99 (ISO)' Target Function Library. For more information, see “Calling C Functions in Actions” and “Type Cast Operations” in the *Stateflow User's Guide*.

Change in Text and Visibility of Parameter Prompt for Easier Use with Fixed-Point Advisor and Fixed-Point Tool

In the Data properties dialog box, the **Lock output scaling against changes by the autoscaling tool** check box is now **Lock data type setting against changes by the fixed-point tools**. Previously, this check box was visible only if you entered an expression or a fixed-point data type, such as `fixdt(1,16,0)`. This check box is now visible for any data type specification. This enhancement enables you to lock the current data type settings on the dialog box against changes that the Fixed-Point Advisor or Fixed-Point Tool chooses.

For more information, see “Fixed-Point Data Properties” and “Automatic Scaling of Stateflow Fixed-Point Data” in the *Stateflow User's Guide*.

Charts Closed By Default When Opening Models Saved in Formats of Earlier Versions

If you save a model with Stateflow charts in the format of an earlier version, the charts appear closed when you open the new MDL-file.

New and Enhanced Demos

The following demo has been added in R2009b:

Demo...	Shows how you can...
sf_aircraft	Design a fault detection, isolation, and recovery (FDIR) application for a pair of aircraft elevators with redundant actuators

The following demo has been enhanced in R2009b:

Demo...	Now...
sldemo_fuelsys	Uses enumerated data types and Simulink functions in the Stateflow chart to model control logic for the fuel rate control system

Version 7.3 (R2009a) Stateflow and Stateflow Coder Software

This table summarizes what's new in V7.3 (R2009a):

New Features and Changes	Version Compatibility Considerations	Fixed Bugs and Known Problems
Yes Details below	Yes—Details labeled as Compatibility Considerations , below. See also Summary.	Bug Reports Includes fixes

New features and changes introduced in this version are:

- “Support for Saving the Complete Simulation State at a Specific Time” on page 47
- “Enhanced Support for Enumerated Data Types” on page 47
- “New Boolean Keywords in Stateflow Action Language” on page 47
- “Enhanced Control of Inlining State Functions in Generated Code” on page 48
- “New Diagnostic to Detect Unintended Backtracking Behavior in Flow Graphs” on page 48
- “Use of Basic Linear Algebra Subprograms (BLAS) Libraries for Speed” on page 48
- “Enhanced Support for Replacing C Math Functions with Target-Specific Implementations” on page 48
- “Smart Transitions Now Prefer Straight Lines” on page 49
- “Clicking Up-Arrow Button in the Stateflow Editor Closes Top-Level Chart” on page 49
- “Enhanced Type Resolution for Symbols” on page 49
- “Enhanced Code Generation for Stateflow Events” on page 49
- “Enhanced Real-Time Workshop Generated Code for Charts with Simulink Functions” on page 50

- “Use of en, du, ex, entry, during, and exit for Data and Event Names Being Disallowed in a Future Version” on page 50
- “Support for Machine-Parented Events Being Removed in a Future Version” on page 50

Support for Saving the Complete Simulation State at a Specific Time

You can save the complete simulation state at a specific time and then load that state for further simulation. This enhancement provides these benefits:

- Enables running isolated segments of a simulation without starting from time $t = 0$, which saves time
- Enables testing of the same chart configuration with different settings
- Enables testing of hard-to-reach chart configurations by loading a specific simulation state

For more information, see “Saving and Restoring Simulations with SimState” in the *Stateflow User’s Guide*.

Enhanced Support for Enumerated Data Types

In R2009a, you can use enumerated data in Embedded MATLAB functions, truth table functions that use Embedded MATLAB action language, and Truth Table blocks. See “Using Enumerated Data in Stateflow Charts” in the *Stateflow User’s Guide*.

New Boolean Keywords in Stateflow Action Language

You can now use `true` and `false` as Boolean keywords in Stateflow action language. For more information, see “Symbols in Action Language” in the *Stateflow User’s Guide*.

Enhanced Control of Inlining State Functions in Generated Code

In R2009a, a new **Function Inline Option** parameter is available in the State properties dialog box. This parameter enables better control of inlining state functions in generated code, which provides these benefits:

- Prevents small changes to a model from causing major changes to the structure of generated code
- Enables easier manual inspection of generated code, because of a one-to-one mapping between the code and the model

For more information, see “Controlling Inlining of State Functions in Generated Code” in the *Stateflow User’s Guide*.

New Diagnostic to Detect Unintended Backtracking Behavior in Flow Graphs

A new diagnostic detects unintended backtracking behavior in flow graphs during simulation. A warning message appears, with suggestions on how to fix the flow graph to prevent unintended backtracking. For more information, see “Best Practices for Creating Flow Graphs” in the *Stateflow User’s Guide*.

Use of Basic Linear Algebra Subprograms (BLAS) Libraries for Speed

Embedded MATLAB functions in Stateflow charts can now use BLAS libraries to speed up low-level matrix operations during simulation. For more information, see “Simulation Target Pane: General” in the Simulink documentation.

Enhanced Support for Replacing C Math Functions with Target-Specific Implementations

You can now replace the `pow` function with a target-specific implementation. For more information about Target Function Libraries, see:

- “Replacement of C Math Library Functions with Target-Specific Implementations”

- “Replacing Operators with Target Functions”

Smart Transitions Now Prefer Straight Lines

In R2009a, the graphical behavior of smart transitions has been enhanced as follows:

- Smart transitions maintain straight lines between states and junctions whenever possible. Previously, smart transitions would preserve curved lines.
- When you drag a smart transition radially around a junction, the end on the junction follows the tip to maintain a straight line by default. Previously, the end on the junction would maintain its original location and not follow the tip of the transition.

For more information, see “What Smart Transitions Do” in the *Stateflow User’s Guide*.

Clicking Up-Arrow Button in the Stateflow Editor Closes Top-Level Chart

When a top-level chart appears in the Stateflow Editor, clicking the up-arrow button in the toolbar causes the chart to close and the Simulink model that contains the chart to appear. This behavior is consistent with clicking the up-arrow button in the toolbar of a Simulink subsystem window.

Previously, clicking the up-arrow button for a top-level chart would cause the Simulink model to appear, but the chart would not close. For more information, see “Navigating Subcharts” in the *Stateflow User’s Guide*.

Enhanced Type Resolution for Symbols

In R2009a, type resolution for Stateflow data has been enhanced to support any MATLAB expression that evaluates to a type.

Enhanced Code Generation for Stateflow Events

In R2009a, the generated code for managing Stateflow events uses a deterministic numbering method. This enhancement minimizes unnecessary

differences in the generated code for charts between R2009a and any future release.

Enhanced Real-Time Workshop Generated Code for Charts with Simulink Functions

In R2009a, Real-Time Workshop generated code for charts with Simulink functions no longer uses unneeded global variables for the function inputs and outputs. The interface can be represented by local temporary variables or completely eliminated by optimizations, such as expression folding. This enhancement provides reduced RAM consumption and faster execution time.

Use of *en*, *du*, *ex*, *entry*, *during*, and *exit* for Data and Event Names Being Disallowed in a Future Version

In a future version of Stateflow software, use of *en*, *du*, *ex*, *entry*, *during*, or *exit* for naming data or events will be disallowed. In R2009a, a warning message appears when you run a model that contains any of these keywords as the names of data or events.

Compatibility Considerations

To avoid warning messages, rename any data or event that uses *en*, *du*, *ex*, *entry*, *during*, or *exit* as an identifier.

Support for Machine-Parented Events Being Removed in a Future Version

In a future version of Stateflow software, support for machine-parented events will be removed. In R2009a, a warning message appears when you simulate models that contain events at the machine level.

Compatibility Considerations

To prevent undesired behavior for simulation and code generation, do not use machine-parented events. For simulation, broadcasting an event to all charts in your model causes the following to occur:

- Charts wake up without regard to data dependencies.
- Charts that are disabled might wake up.
- Charts that use function-call or edge-triggered events wake up.
- Charts unrelated to the event wake up.
- Infinite recursive cycles can occur because the chart that broadcasts the event wakes up.

For code generation, machine-parented events prevent code reuse for the entire model.

Version 7.2 (R2008b) Stateflow and Stateflow Coder Software

This table summarizes what's new in V7.2 (R2008b):

New Features and Changes	Version Compatibility Considerations	Fixed Bugs and Known Problems
Yes Details below	Yes—Details labeled as Compatibility Considerations , below. See also Summary.	Bug Reports Includes fixes

New features and changes introduced in this version are:

- “Support for Embedding Simulink Function-Call Subsystems in a Stateflow Chart” on page 53
- “Support for Using Enumerated Data Types in a Stateflow Chart” on page 53
- “New Alignment, Distribution, and Resizing Commands for Stateflow Charts” on page 53
- “Unified Simulation and Embeddable Code Generation Options for Stateflow Charts and Truth Table Blocks” on page 54
- “New Pattern Wizard for Consistent Creation of Logic Patterns and Iterative Loops” on page 88
- “Support for Initializing Vectors and Matrices in the Data Properties Dialog Box” on page 89
- “Change in Default Mode for Ordering Parallel States and Outgoing Transitions” on page 89
- “Optimized Inlining of Code Generated for Stateflow Charts” on page 89
- “More Efficient Parsing for Nonlibrary Models” on page 89
- “Change in Casting Behavior When Calling MATLAB Functions in a Chart” on page 89

- “Use of Output Data with Change Detection Operators Disallowed for Initialize-Outputs-at-Wakeup Mode” on page 90
- “Parsing a Stateflow Chart Without Simulation No Longer Detects Unresolved Symbol Errors” on page 90
- “Generation of a Unique Name for a Copied State Limited to States Without Default Labels” on page 91
- “New Configuration Set Created When Loading Nonlibrary Models with an Active Configuration Reference” on page 91

Support for Embedding Simulink Function-Call Subsystems in a Stateflow Chart

You can use a Simulink function to embed a function-call subsystem in a Stateflow chart. You fill this function with Simulink blocks and call it in state actions and on transitions. Like graphical functions, truth table functions, and Embedded MATLAB functions, you can use multiple return values with Simulink functions.

For more information, see “Using Simulink Functions in Stateflow Charts” in the *Stateflow User’s Guide*.

Support for Using Enumerated Data Types in a Stateflow Chart

You can use data of an enumerated type in a Stateflow chart.

For more information, see “Using Enumerated Data in Stateflow Charts” in the *Stateflow User’s Guide* and “Enumerations and Modeling” in the *Simulink User’s Guide*.

New Alignment, Distribution, and Resizing Commands for Stateflow Charts

You can use alignment, distribution, and resizing commands on graphical chart objects, such as states, functions, and boxes.

For more information, see “Formatting Chart Objects” in the *Stateflow User’s Guide*.

Unified Simulation and Embeddable Code Generation Options for Stateflow Charts and Truth Table Blocks

You can use a single dialog box to specify simulation and embeddable code generation options that apply to Stateflow charts and Truth Table blocks. These changes apply:

Type of Model	Simulation Options	Embeddable Code Generation Options
Nonlibrary	Migrated from the Simulation Target dialog box to the Configuration Parameters dialog box See “GUI Changes in Simulation Options for Nonlibrary Models” on page 54	Enhanced with new options in the Real-Time Workshop pane of the Configuration Parameters dialog box See “GUI Enhancements in Real-Time Workshop Code Generation Options for Nonlibrary Models” on page 65
Library	Migrated from the Simulation Target dialog box to the Configuration Parameters dialog box See “GUI Changes in Simulation Options for Library Models” on page 60	Migrated from the RTW Target dialog box to the Configuration Parameters dialog box See “GUI Changes in Real-Time Workshop Code Generation Options for Library Models” on page 69

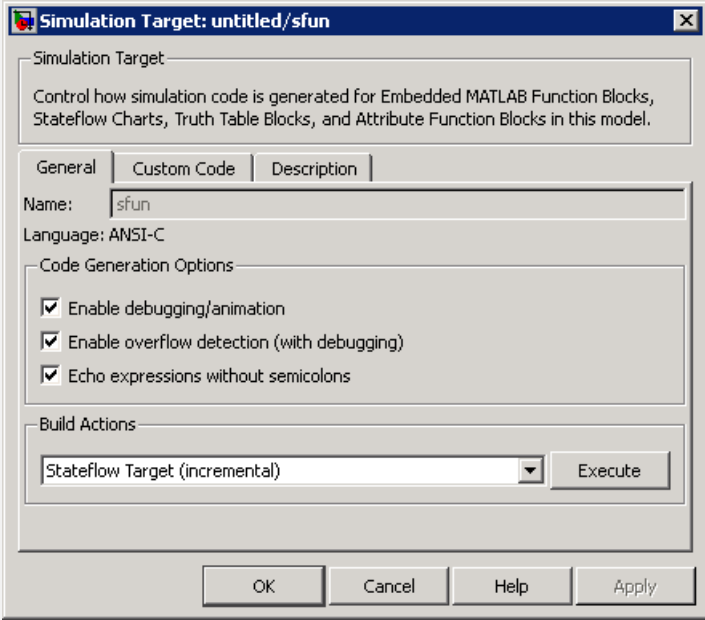
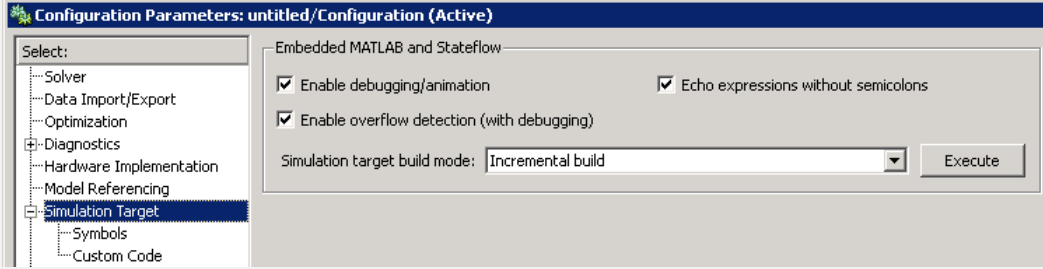
For more information, see “Configuration Parameters Dialog Box” in the *Simulink Graphical User Interface* and “Building Targets” in the *Stateflow User’s Guide*.

For compatibility information, see “Compatibility Considerations” on page 83.

GUI Changes in Simulation Options for Nonlibrary Models

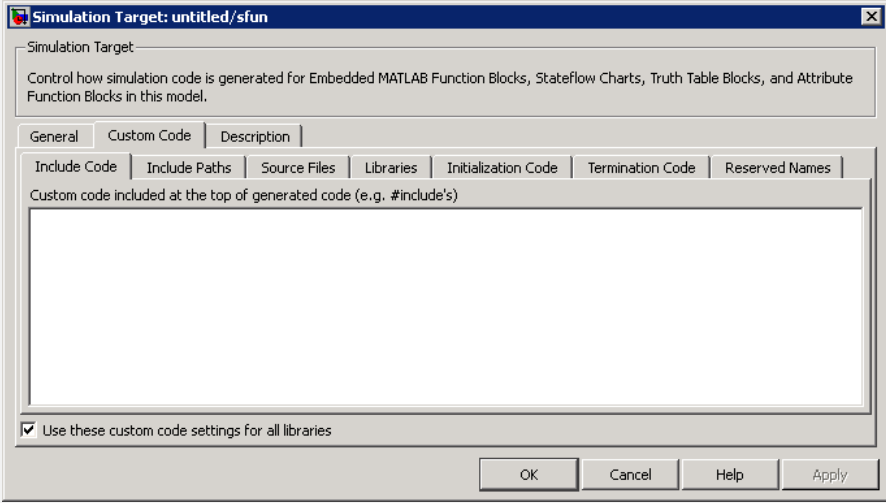
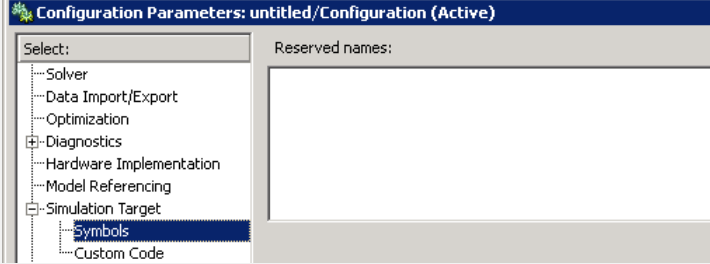
The following sections describe changes in the panes of the Simulation Target dialog box for nonlibrary models.

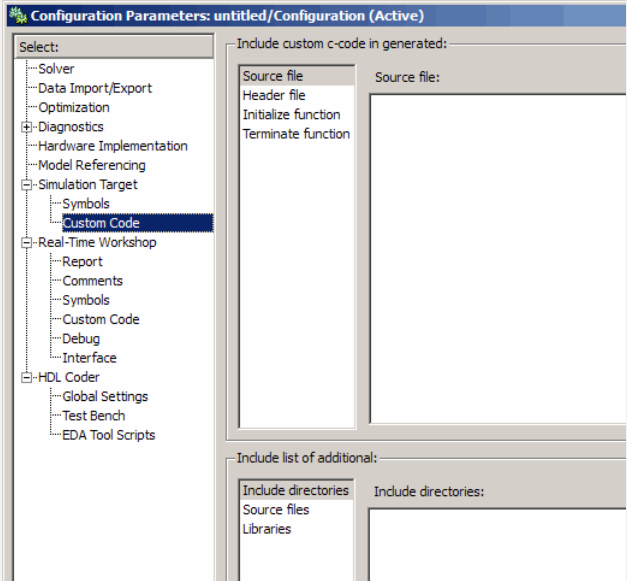
Changes for the General Pane of the Simulation Target Dialog Box.

Release	Appearance
Previous	<p data-bbox="278 361 902 390">General pane of the Simulation Target dialog box</p> 
New	<p data-bbox="278 1067 1139 1097">Simulation Target pane of the Configuration Parameters dialog box</p> 

For details, see “Nonlibrary Models: Mapping of GUI Options from the Simulation Target Dialog Box to the Configuration Parameters Dialog Box” on page 58.

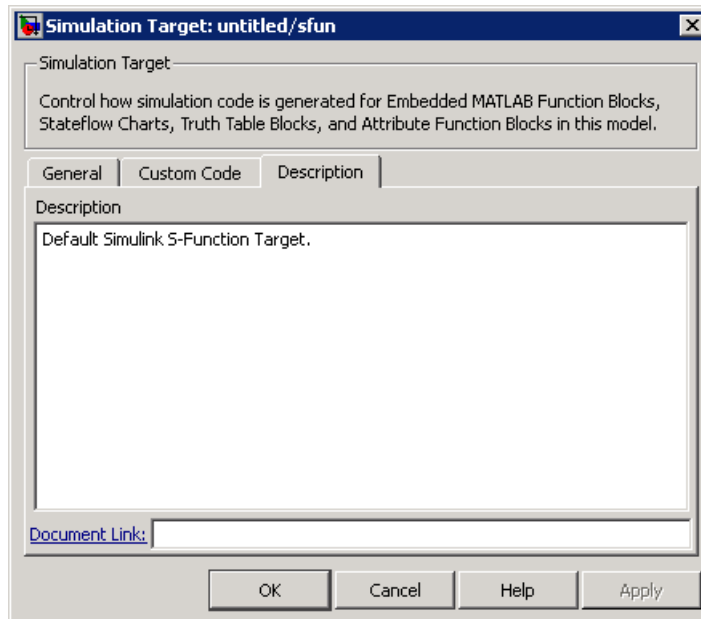
Changes for the Custom Code Pane of the Simulation Target Dialog Box.

Release	Appearance
Previous	<p>Custom Code pane of the Simulation Target dialog box</p> 
New	<p>Simulation Target > Symbols pane of the Configuration Parameters dialog box</p> 

Release	Appearance
New	<p data-bbox="278 300 1307 361">Simulation Target > Custom Code pane of the Configuration Parameters dialog box</p> 

For details, see “Nonlibrary Models: Mapping of GUI Options from the Simulation Target Dialog Box to the Configuration Parameters Dialog Box” on page 58.

Changes for the Description Pane of the Simulation Target Dialog Box. In previous releases, the **Description** pane of the Simulation Target dialog box appeared as follows.



In R2008b, these options are no longer available. For older models where the **Description** pane contained information, the text is now accessible only in the Model Explorer. When you select **Simulink Root > Configuration Preferences** in the **Model Hierarchy** pane, the text appears in the **Description** field for that model.

Nonlibrary Models: Mapping of GUI Options from the Simulation Target Dialog Box to the Configuration Parameters Dialog Box.

For nonlibrary models, the following table maps each GUI option in the Simulation Target dialog box to the equivalent in the Configuration Parameters dialog box. The options are listed in order of appearance in the Simulation Target dialog box.

Old Option in the Simulation Target Dialog Box	New Option in the Configuration Parameters Dialog Box	Default Value of New Option
General > Enable debugging / animation	Simulation Target > Enable debugging / animation	on
General > Enable overflow detection (with debugging)	Simulation Target > Enable overflow detection (with debugging)	on
General > Echo expressions without semicolons	Simulation Target > Echo expressions without semicolons	on
General > Build Actions	Simulation Target > Simulation target build mode	Incremental build
None	Simulation Target > Custom Code > Source file	''
Custom Code > Include Code	Simulation Target > Custom Code > Header file	''
Custom Code > Include Paths	Simulation Target > Custom Code > Include directories	''
Custom Code > Source Files	Simulation Target > Custom Code > Source files	''
Custom Code > Libraries	Simulation Target > Custom Code > Libraries	''
Custom Code > Initialization Code	Simulation Target > Custom Code > Initialize function	''
Custom Code > Termination Code	Simulation Target > Custom Code > Terminate function	''
Custom Code > Reserved Names	Simulation Target > Symbols > Reserved names	{}

Old Option in the Simulation Target Dialog Box	New Option in the Configuration Parameters Dialog Box	Default Value of New Option
Custom Code > Use these custom code settings for all libraries	None	Not applicable
Description > Description	None <hr/> Note If you load an older model that contained user-specified text in the Description field, that text now appears in the Model Explorer. When you select Simulink Root > Configuration Preferences in the Model Hierarchy pane, the text appears in the Description field for that model. <hr/>	Not applicable
Description > Document Link	None	Not applicable

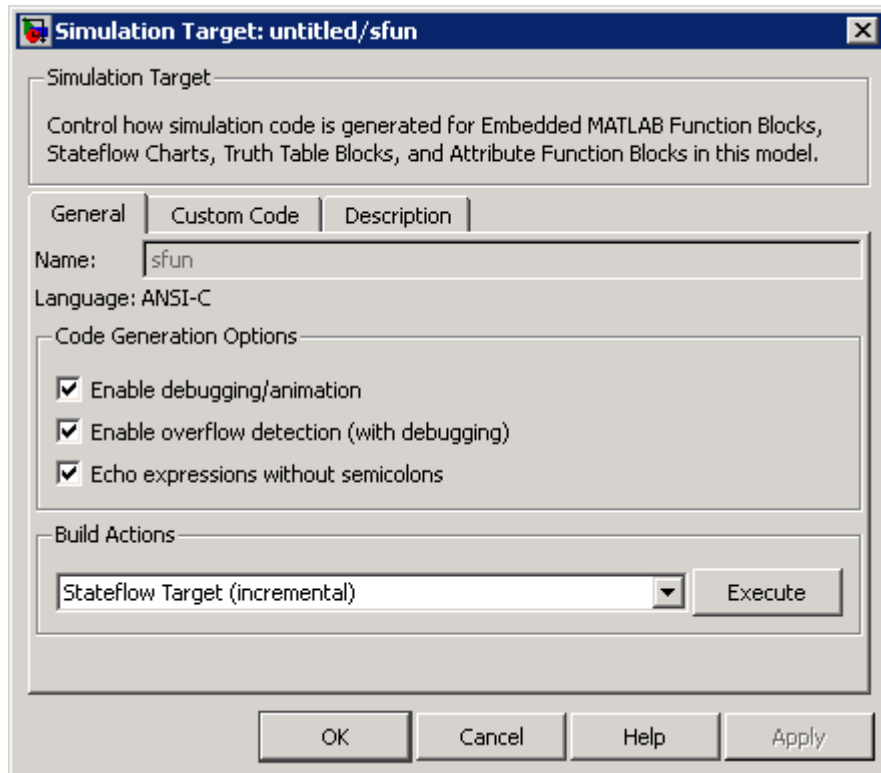
Note For nonlibrary models, **Simulation Target** options in the Configuration Parameters dialog box are also available in the Model Explorer. When you select **Simulink Root > Configuration Preferences** in the **Model Hierarchy** pane, you can select **Simulation Target** in the **Contents** pane to access the options.

GUI Changes in Simulation Options for Library Models

The following sections describe changes in the panes of the Simulation Target dialog box for library models.

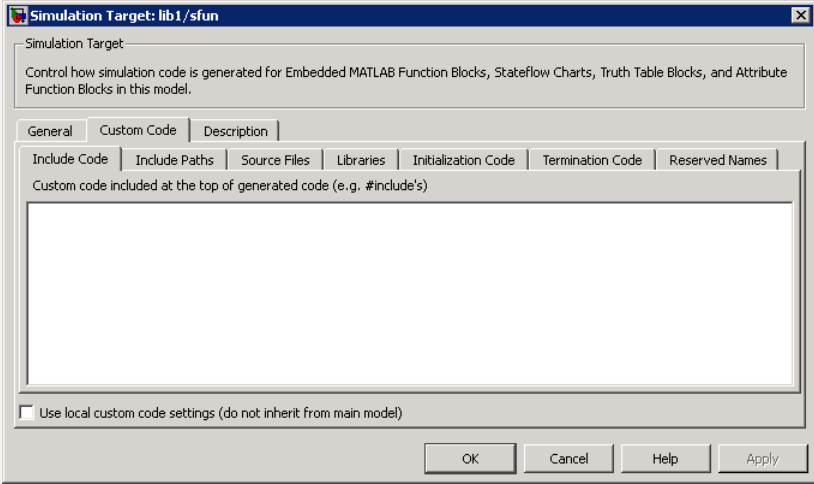
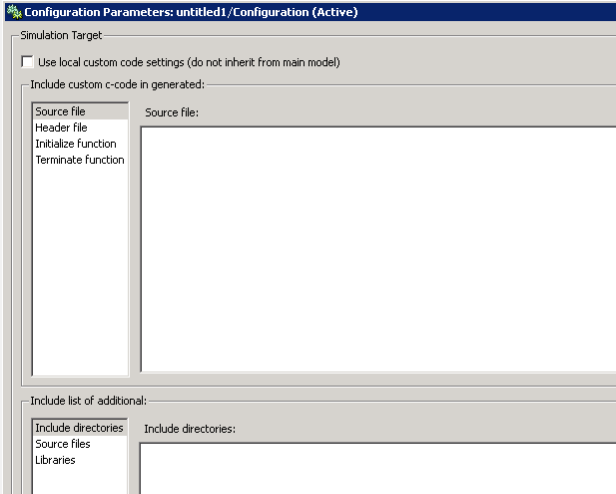
Changes for the General Pane of the Simulation Target Dialog Box.

In previous releases, the **General** pane of the Simulation Target dialog box for library models appeared as follows.



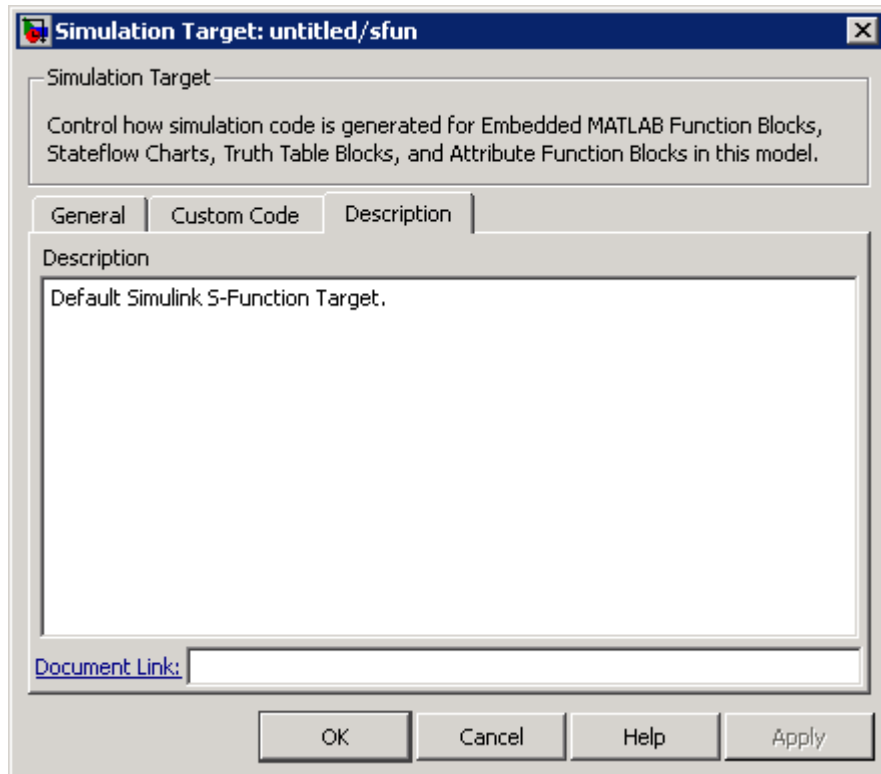
In R2008b, these options are no longer available. All library models inherit these option settings from the main model to which the libraries are linked.

Changes for the Custom Code Pane of the Simulation Target Dialog Box.

Release	Appearance
Previous	<p>Custom Code pane of the Simulation Target dialog box</p> 
New	<p>Simulation Target pane of the Configuration Parameters dialog box</p> 

For details, see “Library Models: Mapping of GUI Options from the Simulation Target Dialog Box to the Configuration Parameters Dialog Box” on page 64.

Changes for the Description Pane of the Simulation Target Dialog Box. In previous releases, the **Description** pane of the Simulation Target dialog box appeared as follows.



In R2008b, these options are no longer available. For older models where the **Description** pane contained information, the text is discarded.

Library Models: Mapping of GUI Options from the Simulation Target Dialog Box to the Configuration Parameters Dialog Box. For library models, the following table maps each GUI option in the Simulation Target dialog box to the equivalent in the Configuration Parameters dialog box. The options are listed in order of appearance in the Simulation Target dialog box.

Old Option in the Simulation Target Dialog Box	New Option in the Configuration Parameters Dialog Box	Default Value of New Option
General > Enable debugging / animation	None	Not applicable
General > Enable overflow detection (with debugging)	None	Not applicable
General > Echo expressions without semicolons	None	Not applicable
General > Build Actions	None	Not applicable
None	Simulation Target > Source file	' '
Custom Code > Include Code	Simulation Target > Header file	' '
Custom Code > Include Paths	Simulation Target > Include directories	' '
Custom Code > Source Files	Simulation Target > Source files	' '
Custom Code > Libraries	Simulation Target > Libraries	' '
Custom Code > Initialization Code	Simulation Target > Initialize function	' '
Custom Code > Termination Code	Simulation Target > Terminate function	' '
Custom Code > Reserved Names	None	Not applicable

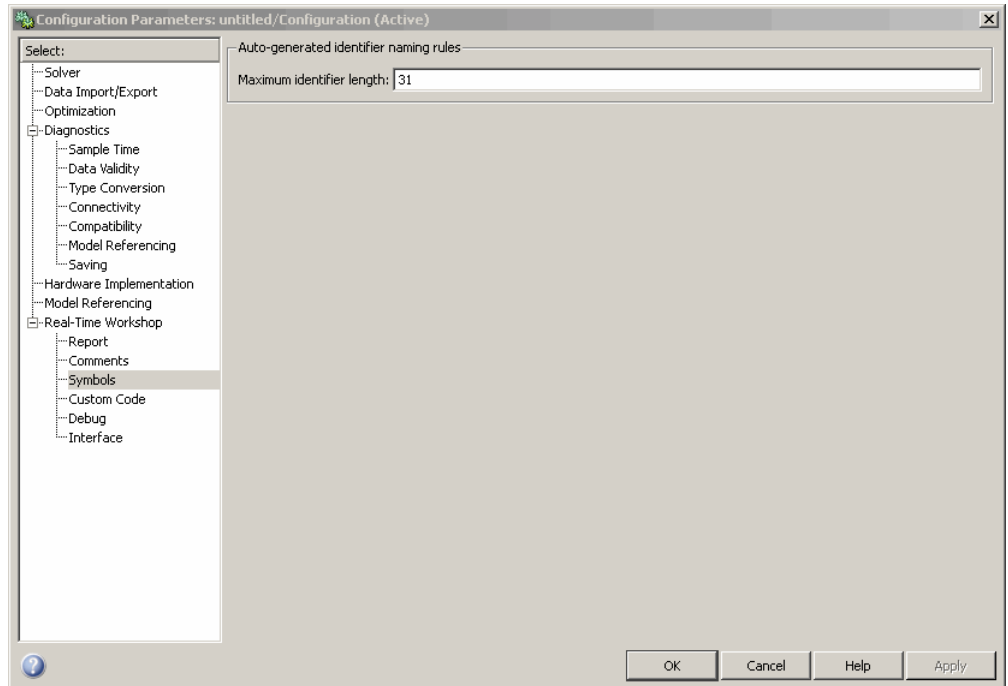
Old Option in the Simulation Target Dialog Box	New Option in the Configuration Parameters Dialog Box	Default Value of New Option
Custom Code > Use local custom code settings (do not inherit from main model)	Simulation Target > Use local custom code settings (do not inherit from main model)	off
Description > Description	None	Not applicable
Description > Document Link	None	Not applicable

Note For library models, **Simulation Target** options in the Configuration Parameters dialog box are not available in the Model Explorer.

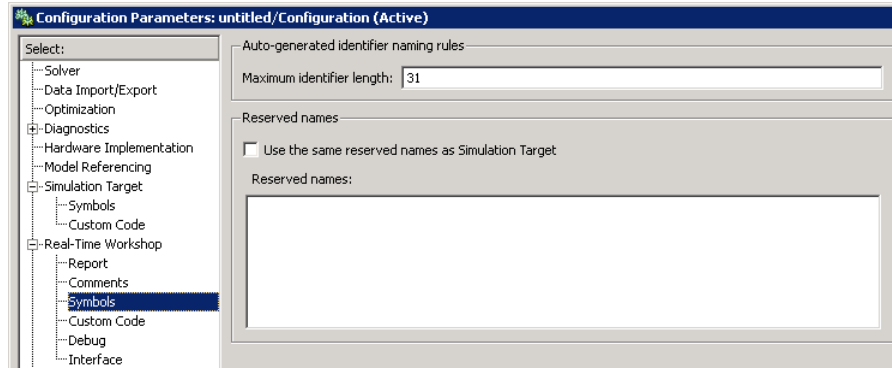
GUI Enhancements in Real-Time Workshop Code Generation Options for Nonlibrary Models

The following sections describe enhancements to the **Real-Time Workshop** pane of the Configuration Parameters dialog box for nonlibrary models.

Enhancement for the Real-Time Workshop: Symbols Pane of the Configuration Parameters Dialog Box. In previous releases, the **Real-Time Workshop > Symbols** pane of the Configuration Parameters dialog box appeared as follows.

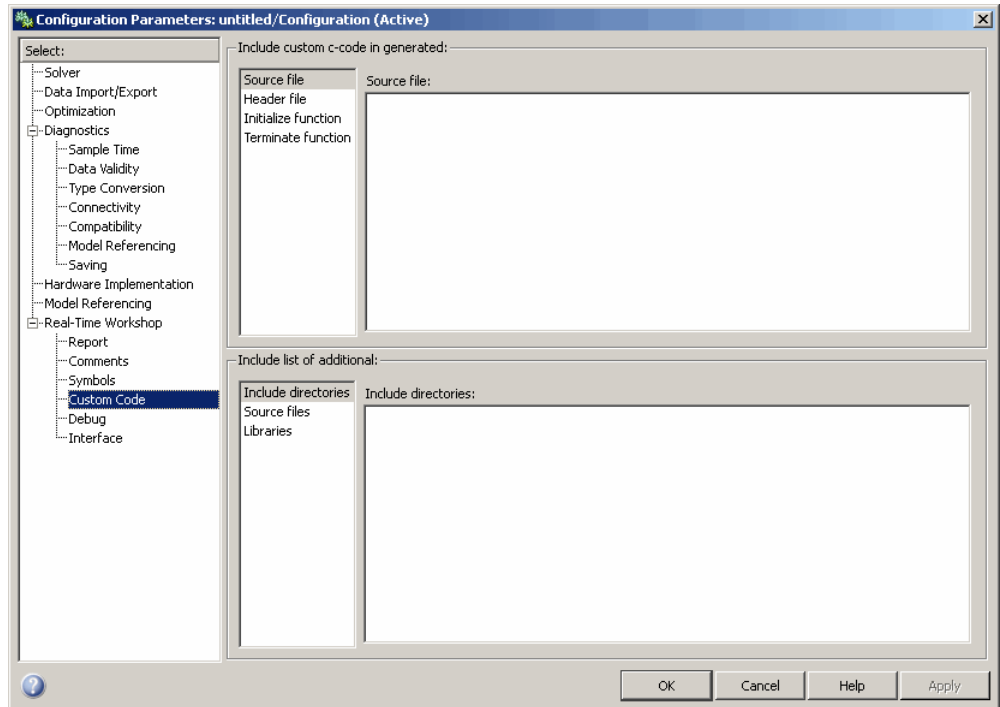


In R2008b, a new option is available in this pane: **Reserved names**. You can use this option to specify a set of keywords that the Real-Time Workshop build process should not use. This action prevents naming conflicts between functions and variables from external environments and identifiers in the generated code.

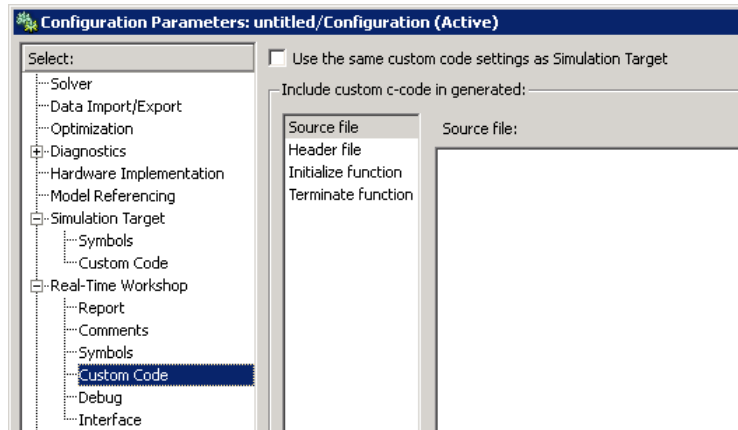


You can also choose to use the reserved names specified in the **Simulation Target > Symbols** pane to avoid entering the same information twice for the nonlibrary model. Select the **Use the same reserved names as Simulation Target** check box.

Enhancement for the Real-Time Workshop: Custom Code Pane of the Configuration Parameters Dialog Box. In previous releases, the **Real-Time Workshop > Custom Code** pane of the Configuration Parameters dialog box appeared as follows.



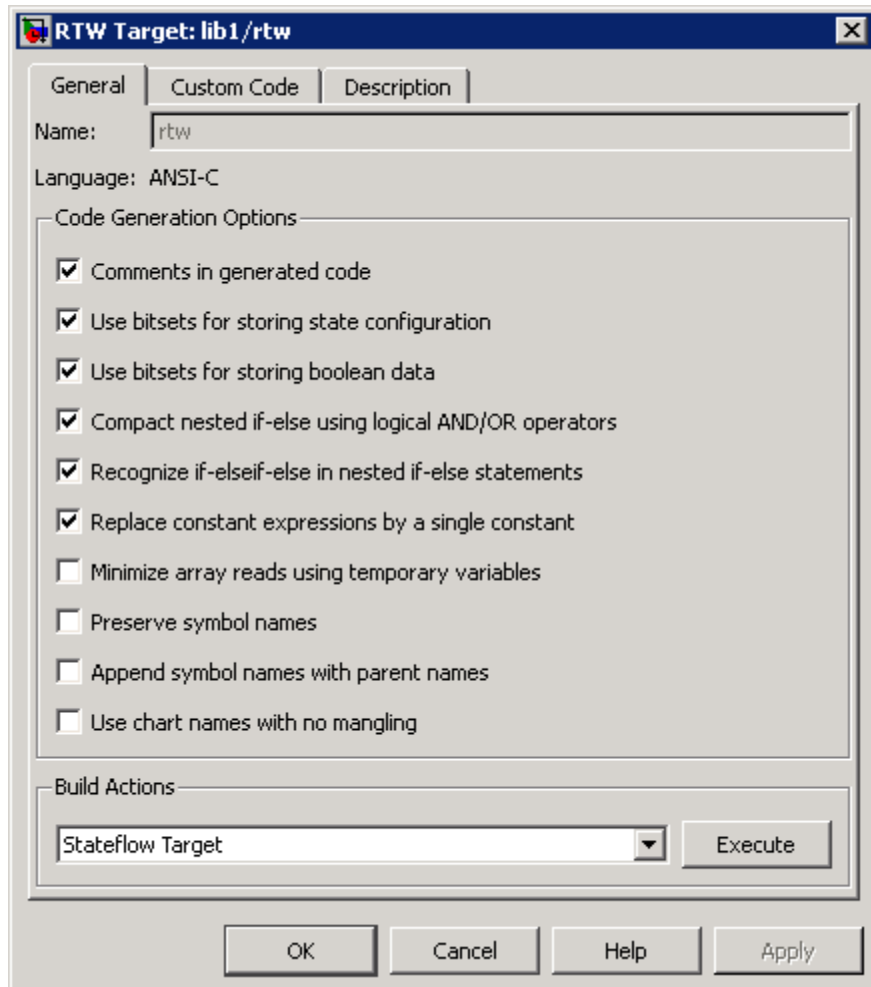
In R2008b, a new option is available in this pane: **Use the same custom code settings as Simulation Target**. You can use this option to copy the custom code settings from the **Simulation Target > Custom Code** pane to avoid entering the same information twice for the nonlibrary model.



GUI Changes in Real-Time Workshop Code Generation Options for Library Models

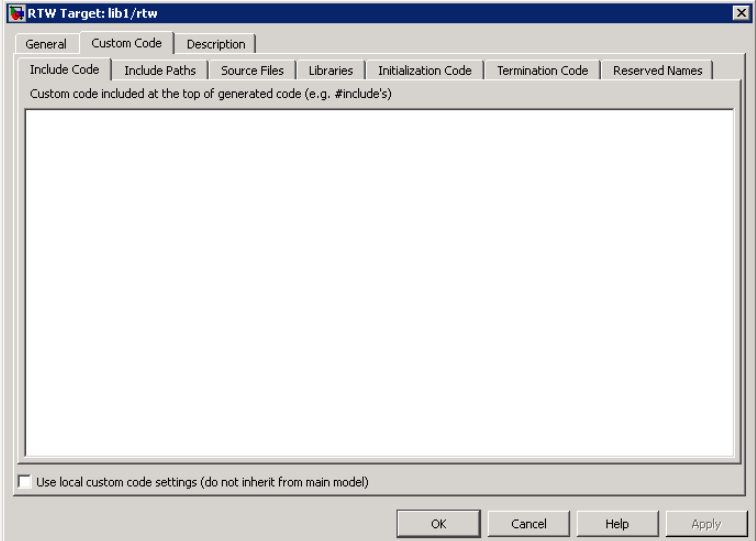
The following sections describe changes in the panes of the RTW Target dialog box for library models.

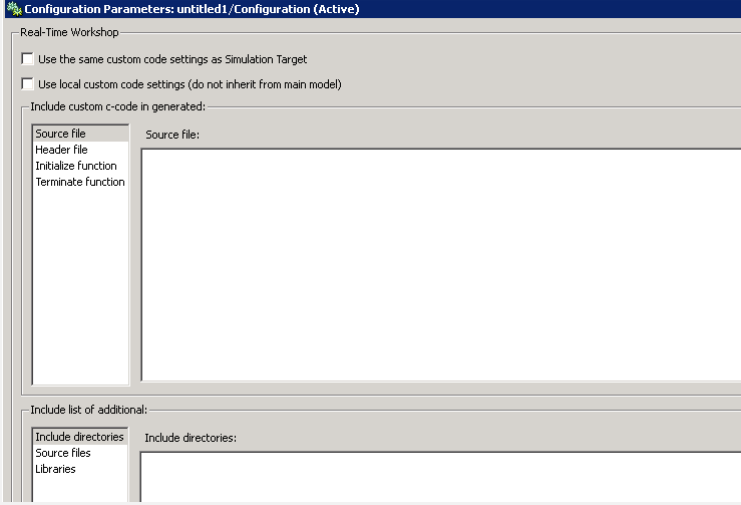
Changes for the General Pane of the RTW Target Dialog Box. In previous releases, the **General** pane of the RTW Target dialog box for library models appeared as follows.



In R2008b, these options are no longer available. During Real-Time Workshop code generation, options specified for the main model are used.

Changes for the Custom Code Pane of the RTW Target Dialog Box.

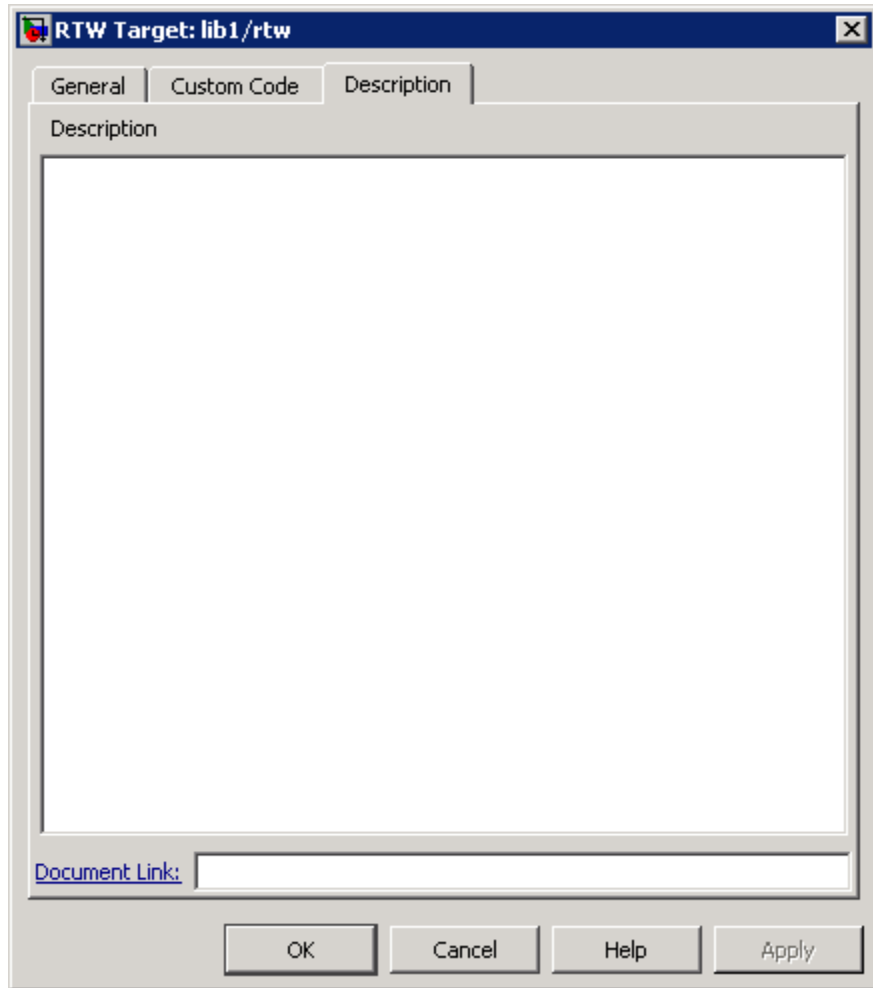
Release	Appearance
Previous	<p data-bbox="278 361 902 390">Custom Code pane of the RTW Target dialog box</p> 

Release	Appearance
New	<p data-bbox="278 302 1173 331">Real-Time Workshop pane of the Configuration Parameters dialog box</p> 

For details, see “Library Models: Mapping of GUI Options from the RTW Target Dialog Box to the Configuration Parameters Dialog Box” on page 74.

Changes for the Description Pane of the RTW Target Dialog Box.

In previous releases, the **Description** pane of the RTW Target dialog box appeared as follows.



In R2008b, these options are no longer available. For older models where the **Description** pane contained information, the text is discarded.

Library Models: Mapping of GUI Options from the RTW Target Dialog Box to the Configuration Parameters Dialog Box. For library models, the following table maps each GUI option in the RTW Target dialog box to the equivalent in the Configuration Parameters dialog box. The options are listed in order of appearance in the RTW Target dialog box.

Old Option in the RTW Target Dialog Box	New Option in the Configuration Parameters Dialog Box	Default Value of New Option
General > Comments in generated code	None	Not applicable
General > Use bitsets for storing state configuration	None	Not applicable
General > Use bitsets for storing boolean data	None	Not applicable
General > Compact nested if-else using logical AND/OR operators	None	Not applicable
General > Recognize if-elseif-else in nested if-else statements	None	Not applicable
General > Replace constant expressions by a single constant	None	Not applicable
General > Minimize array reads using temporary variables	None	Not applicable
General > Preserve symbol names	None	Not applicable
General > Append symbol names with parent names	None	Not applicable
General > Use chart names with no mangling	None	Not applicable
General > Build Actions	None	Not applicable

Old Option in the RTW Target Dialog Box	New Option in the Configuration Parameters Dialog Box	Default Value of New Option
None	Real-Time Workshop > Source file	''
Custom Code > Include Code	Real-Time Workshop > Header file	''
Custom Code > Include Paths	Real-Time Workshop > Include directories	''
Custom Code > Source Files	Real-Time Workshop > Source files	''
Custom Code > Libraries	Real-Time Workshop > Libraries	''
Custom Code > Initialization Code	Real-Time Workshop > Initialize function	''
Custom Code > Termination Code	Real-Time Workshop > Terminate function	''
Custom Code > Reserved Names	None	Not applicable
Custom Code > Use local custom code settings (do not inherit from main model)	Real-Time Workshop > Use local custom code settings (do not inherit from main model)	off
None	Real-Time Workshop > Use the same custom code settings as Simulation Target	off
Description > Description	None	Not applicable
Description > Document Link	None	Not applicable

Note For library models, **Real-Time Workshop** options in the Configuration Parameters dialog box are not available in the Model Explorer.

Mapping of Target Object Properties to Parameters in the Configuration Parameters Dialog Box

Previously, you could programmatically set options for simulation and embeddable code generation by accessing the API properties of Target objects `sfun` and `rtw`, respectively. In R2008b, the API properties of Target objects `sfun` and `rtw` are replaced by parameters that you configure using the commands `get_param` and `set_param`.

For compatibility details, see “Updating Scripts That Set Options Programmatically for Simulation and Embeddable Code Generation” on page 83 and “What Happens When You Load an Older Model in R2008b” on page 84.

Mapping of Object Properties to Simulation Parameters for Nonlibrary Models. The following table maps API properties of the Target object `sfun` for nonlibrary models to the equivalent parameters in R2008b. Object properties are listed in alphabetical order; those not listed in the table do not have equivalent parameters in R2008b.

Old <code>sfun</code> Object Property	Old Option in the Simulation Target Dialog Box	New Configuration Parameter	New Option in the Configuration Parameters Dialog Box
CodeFlagsInfo ('debug')	General > Enable debugging / animation	SFSimEnableDebug string - off, on	Simulation Target > Enable debugging / animation
CodeFlagsInfo ('overflow')	General > Enable overflow detection	SFSimOverflowDetection string - off, on	Simulation Target > Enable overflow

Old sfun Object Property	Old Option in the Simulation Target Dialog Box	New Configuration Parameter	New Option in the Configuration Parameters Dialog Box
	(with debugging)		detection (with debugging)
CodeFlagsInfo ('echo')	General > Echo expressions without semicolons	SFSimEcho string - off, on	Simulation Target > Echo expressions without semicolons
CustomCode	Custom Code > Include Code	SimCustomHeaderCode string -	Simulation Target > Custom Code > Header file
CustomInitializer	Custom Code > Initialization Code	SimCustomInitializer string -	Simulation Target > Custom Code > Initialize function
CustomTerminator	Custom Code > Termination Code	SimCustomTerminator string -	Simulation Target > Custom Code > Terminate function
ReservedNames	Custom Code > Reserved Names	SimReservedNameArray string array - {}	Simulation Target > Symbols > Reserved names

Old sfun Object Property	Old Option in the Simulation Target Dialog Box	New Configuration Parameter	New Option in the Configuration Parameters Dialog Box
UserIncludeDirs	Custom Code > Include Paths	SimUserIncludeDirs <i>string</i> -	Simulation Target > Custom Code > Include directories
UserLibraries	Custom Code > Libraries	SimUserLibraries <i>string</i> -	Simulation Target > Custom Code > Libraries
UserSources	Custom Code > Source Files	SimUserSources <i>string</i> -	Simulation Target > Custom Code > Source files

Mapping of Object Properties to Simulation Parameters for Library Models. The following table maps API properties of the Target object sfun for library models to the equivalent parameters in R2008b. Object properties are listed in alphabetical order; those not listed in the table do not have equivalent parameters in R2008b.

Old sfun Object Property	Old Option in the Simulation Target Dialog Box	New Configuration Parameter	New Option in the Configuration Parameters Dialog Box
CustomCode	Custom Code > Include Code	SimCustomHeaderCode <i>string</i> -	Simulation Target > Header file
CustomInitializer	Custom Code > Initialization Code	SimCustomInitializer <i>string</i> -	Simulation Target > Initialize function

Old sfun Object Property	Old Option in the Simulation Target Dialog Box	New Configuration Parameter	New Option in the Configuration Parameters Dialog Box
CustomTerminator	Custom Code > Termination Code	SimCustomTerminator <i>string</i> -	Simulation Target > Terminate function
UseLocalCustomCodeSettings	Custom Code > Use local custom code settings (do not inherit from main model)	SimUseLocalCustomCode <i>string</i> - off , on	Simulation Target > Use local custom code settings (do not inherit from main model)
UserIncludeDirs	Custom Code > Include Paths	SimUserIncludeDirs <i>string</i> -	Simulation Target > Include directories
UserLibraries	Custom Code > Libraries	SimUserLibraries <i>string</i> -	Simulation Target > Libraries
UserSources	Custom Code > Source Files	SimUserSources <i>string</i> -	Simulation Target > Source files

Mapping of Object Properties to Code Generation Parameters for Library Models.

The following table maps API properties of the Target object `rtw` for library models to the equivalent parameters in R2008b. Object properties are listed in alphabetical order; those not listed in the table do not have equivalent parameters in R2008b.

Old rtw Object Property	Old Option in the RTW Target Dialog Box	New Configuration Parameter	New Option in the Configuration Parameters Dialog Box
CustomCode	Custom Code > Include Code	CustomHeaderCode <i>string</i> -	Real-Time Workshop > Header file
CustomInitializer	Custom Code > Initialization Code	CustomInitializer <i>string</i> -	Real-Time Workshop > Initialize function
CustomTerminator	Custom Code > Termination Code	CustomTerminator <i>string</i> -	Real-Time Workshop > Terminate function
UseLocalCustomCodeSettings	Custom Code > Use local custom code settings (do not inherit from main model)	RTWUseLocalCustomCode <i>string</i> - off , on	Real-Time Workshop > Use local custom code settings (do not inherit from main model)
UserIncludeDirs	Custom Code > Include Paths	CustomInclude <i>string</i> -	Real-Time Workshop > Include directories
UserLibraries	Custom Code > Libraries	CustomLibrary <i>string</i> -	Real-Time Workshop > Libraries
UserSources	Custom Code > Source Files	CustomSource <i>string</i> -	Real-Time Workshop > Source files

New Parameters in the Configuration Parameters Dialog Box for Simulation and Embeddable Code Generation

In R2008b, new parameters are added to the Configuration Parameters dialog box for simulation and embeddable code generation.

New Simulation Parameters for Nonlibrary Models. The following table lists the new simulation parameters that apply to nonlibrary models.

New Configuration Parameter	New Option in the Configuration Parameters Dialog Box	Description
SimBuildMode string – sf_incremental_build , sf_nonincremental_build, sf_make, sf_make_clean, sf_make_clean_objects	Simulation Target > Simulation target build mode	Specifies how you build the simulation target for a model.
SimCustomSourceCode <i>string</i> -	Simulation Target > Custom Code > Source file	Enter code lines to appear near the top of a generated source code file.

New Simulation Parameter for Library Models. The following table lists the new simulation parameter that applies to library models.

New Configuration Parameter	New Option in the Configuration Parameters Dialog Box	Description
SimCustomSourceCode <i>string</i> -	Simulation Target > Source file	Enter code lines to appear near the top of a generated source code file.

New Code Generation Parameters for Nonlibrary Models. The following table lists the new code generation parameters that apply to nonlibrary models.

New Configuration Parameter	New Option in the Configuration Parameters Dialog Box	Description
ReservedNameArray <i>string array - {}</i>	Real-Time Workshop > Symbols > Reserved names	Enter the names of variables or functions in the generated code that match the names of variables or functions specified in custom code.
RTWUseSimCustomCode <i>string – off, on</i>	Real-Time Workshop > Custom Code > Use the same custom code settings as Simulation Target	Specify whether to use the same custom code settings as those specified for simulation.
UseSimReservedNames <i>string – off, on</i>	Real-Time Workshop > Symbols > Use the same reserved names as Simulation Target	Specify whether to use the same reserved names as those specified for simulation.

New Code Generation Parameters for Library Models. The following table lists the new code generation parameters that apply to library models.

New Configuration Parameter	New Option in the Configuration Parameters Dialog Box	Description
CustomSourceCode <i>string –</i>	Real-Time Workshop > Source file	Enter code lines to appear near the top of a generated source code file.
RTWUseSimCustomCode <i>string – off, on</i>	Real-Time Workshop > Use the same custom code settings as Simulation Target	Specify whether to use the same custom code settings as those specified for simulation.

Compatibility Considerations

Updating Scripts That Set Options Programmatically for Simulation and Embeddable Code Generation.

In previous releases, you could use the Stateflow API to set options for simulation and embeddable code generation by accessing the Target object (sfun or rtw) in a Stateflow machine. For example, you could set simulation options programmatically by running these commands in a MATLAB script:

```
r = slroot;
machine = r.find('-isa','Stateflow.Machine','Name','main_md1');
t_sim = machine.find('-isa','Stateflow.Target','Name','sfun');
t_sim.setCodeFlag('debug',1);
t_sim.setCodeFlag('overflow',1);
t_sim.setCodeFlag('echo',1);
t_sim.getCodeFlag('debug');
t_sim.getCodeFlag('overflow');
t_sim.getCodeFlag('echo');
```

In R2008b, you must update your scripts to use the `set_param` and `get_param` commands to configure simulation and embeddable code generation. For example, you can update the previous script as follows:

```
cs = getActiveConfigSet(gcs);
set_param(cs,'SFSimEnableDebug','on');
set_param(cs,'SFSimOverflowDetection','on');
set_param(cs,'SFSimEcho','on');
get_param(cs,'SFSimEnableDebug');
get_param(cs,'SFSimOverflowDetection');
get_param(cs,'SFSimEcho');
```

For information about...	See...
Object properties and their equivalent parameters in R2008b	<p data-bbox="743 302 1307 395">“Mapping of Target Object Properties to Parameters in the Configuration Parameters Dialog Box” on page 76</p> <hr/> <p data-bbox="743 461 1307 652">Note Properties of Target objects <code>sfun</code> and <code>rtw</code> that are no longer supported in R2008b cannot be updated using the command-line API. For a list of unsupported properties, see “What Happens When You Load an Older Model in R2008b” on page 84.</p> <hr/>
Using the <code>set_param</code> and <code>get_param</code> commands	<p data-bbox="743 701 1328 795">“Using the Command-Line API to Set Parameters for Simulation and Embeddable Code Generation” in the <i>Stateflow User’s Guide</i></p>

Accessing Target Options for Library Models.

In previous releases, you could access target options for library models via the **Tools** menu in the Stateflow Editor or the **Contents** pane of the Model Explorer. In R2008b, you must use the **Tools** menu to access target options for library models. For example, to specify parameters for the simulation target, select **Tools > Open Simulation Target** in the Stateflow Editor.

What Happens When You Load an Older Model in R2008b.

When you use R2008b to load a model created in an earlier version, dialog box options and the equivalent object properties for simulation and embeddable code generation targets migrate automatically to the Configuration Parameters dialog box, except in the cases that follow.

For the simulation target of a nonlibrary model, these options and properties do not migrate to the Configuration Parameters dialog box. The information is discarded when you load the model, unless otherwise noted.

Option in the Simulation Target Dialog Box of a Nonlibrary Model	Equivalent Object Property
Custom Code > Use these custom code settings for all libraries	ApplyToAllLibs
Description > Description	Description <hr/> Note If you load an older model that contains user-specified text in the Description field, that text now appears in the Model Explorer. When you select Simulink Root > Configuration Preferences in the Model Hierarchy pane, the text appears in the Description field for that model. <hr/>
Description > Document Link	Document

For the simulation target of a library model, these options and properties do not migrate to the Configuration Parameters dialog box. The information is discarded when you load the model.

Option in the Simulation Target Dialog Box of a Library Model	Equivalent Object Property
General > Enable debugging / animation	CodeFlagsInfo('debug')
General > Enable overflow detection (with debugging)	CodeFlagsInfo('overflow')
General > Echo expressions without semicolons	CodeFlagsInfo('echo')
General > Build Actions	None
Custom Code > Reserved Names	ReservedNames
Description > Description	Description
Description > Document Link	Document

For the embeddable code generation target of a library model, these options and properties do not migrate to the Configuration Parameters dialog box. The information is discarded when you load the model.

Option in the RTW Target Dialog Box of a Library Model	Equivalent Object Property
General > Comments in generated code	CodeFlagsInfo('comments')
General > Use bitsets for storing state configuration	CodeFlagsInfo('statebitsets')
General > Use bitsets for storing boolean data	CodeFlagsInfo('databitsets')
General > Compact nested if-else using logical AND/OR operators	CodeFlagsInfo('emitlogicalops')
General > Recognize if-elseif-else in nested if-else statements	CodeFlagsInfo('elseifdetection')
General > Replace constant expressions by a single constant	CodeFlagsInfo('constantfolding')
General > Minimize array reads using temporary variables	CodeFlagsInfo('redundantloadelimination')
General > Preserve symbol names	CodeFlagsInfo('preservenames')
General > Append symbol names with parent names	CodeFlagsInfo('preservenameswithparent')
General > Use chart names with no mangling	CodeFlagsInfo('exportcharts')
General > Build Actions	None
Custom Code > Reserved Names	ReservedNames
Description > Description	Description
Description > Document Link	Document

What Happens When You Save an Older Model in R2008b.

When you use R2008b to save a model created in an earlier version, parameters for simulation and embeddable code generation from the Configuration Parameters dialog box are saved. However, properties of API Target objects `sfun` and `rtw` are not saved if those properties do not have an equivalent parameter in the Configuration Parameters dialog box (see “What Happens When You Load an Older Model in R2008b” on page 84). Properties that do not migrate to the Configuration Parameters dialog box are discarded when you load the model. Therefore, old Target object properties are not saved even if you choose to save the model as an older version (for example, R2007a).

Workaround for Library Models if They No Longer Use Local Custom Code Settings.

Behavior in R2008a and Earlier Releases

In R2008a and earlier releases, the main model simulation target had a custom code option **Use these custom code settings for all libraries**, or the target property `ApplyToAllLibs`. The library model simulation target had a similar custom code option **Use local custom code settings (do not inherit from main model)**, or the target property `UseLocalCustomCodeSettings`.

The following criteria determined which custom code settings would apply to the library model:

If <code>ApplyToAllLibs</code> for the main model is...	And <code>UseLocalCustomCodeSettings</code> for the library model is...	Then the library model uses...
True	False	Main model custom code
True	True	Local custom code
False	True	Local custom code
False	False	Local custom code (by default, but ambiguous)

The last case was ambiguous, because the main model did not propagate custom code settings and the library model did not specify use of local custom

code settings either. In this case, the default behavior was to use local custom code settings for the library model.

Behavior in R2008b

In R2008b, the **Use these custom code settings for all libraries** option for the main model is removed. The library model either picks up its local custom code settings if specified to do so, or uses the main model custom code settings when the **Use local custom code settings** option is not selected. This change introduces backward incompatibility for older models that use the "False (main model), False (library model)" setup for specifying custom code settings.

Workaround to Prevent Backward Incompatibility

To resolve the ambiguity in older models, you must explicitly select **Use local custom code settings** for the library model when you want the local custom code settings to apply:

- 1** Open the Stateflow simulation target for the library model.
 - a** Load the library model and unlock it.
 - b** Open one of the library charts in the Stateflow Editor.
 - c** Select **Tools > Open Simulation Target**.
- 2** In the dialog box that appears, select **Use local custom code settings (do not inherit from main model)**.

New Pattern Wizard for Consistent Creation of Logic Patterns and Iterative Loops

You can use the Stateflow Pattern Wizard to create commonly used flow graphs such as for-loops in a quick and consistent manner.

For more information, see “Modeling Logic Patterns and Iterative Loops Using Flow Graphs” in the *Stateflow User’s Guide*.

Support for Initializing Vectors and Matrices in the Data Properties Dialog Box

In the Data properties dialog box, you can initialize vectors and matrices in the **Initial value** field of the **Value Attributes** pane.

For more information, see “How to Define Vectors and Matrices” in the *Stateflow User’s Guide*.

Change in Default Mode for Ordering Parallel States and Outgoing Transitions

The default mode for ordering parallel states and outgoing transitions is now explicit. When you create a new chart, you define ordering explicitly in the Stateflow Editor. However, if you load a chart that uses implicit ordering, that mode is retained until you switch to explicit ordering.

For more information, see “Execution Order for Parallel States” and “Evaluation Order for Outgoing Transitions” in the *Stateflow User’s Guide*.

Optimized Inlining of Code Generated for Stateflow Charts

In R2008b, Real-Time Workshop code generation is enhanced to enable optimized inlining of code generated for Stateflow charts.

More Efficient Parsing for Nonlibrary Models

When you parse a nonlibrary model, library charts that are not linked to this model are ignored. This enhancement enables more efficient parsing for nonlibrary models.

Change in Casting Behavior When Calling MATLAB Functions in a Chart

When you call MATLAB functions in a Stateflow chart, scalar inputs are no longer cast automatically to data of type `double`. This behavior applies when you use the `ml` operator to call a built-in or custom MATLAB function. (For details, see “ml Namespace Operator” in the *Stateflow User’s Guide*.)

Compatibility Considerations

Previously, Stateflow generated code for simulation would automatically cast scalar inputs to data of type `double` when calling MATLAB functions in a chart. This behavior has changed. Stateflow charts created in earlier versions now generate errors during simulation if they contain calls to external MATLAB functions that expect scalar inputs of type `double`, but the inputs are of a different data type.

To prevent these errors, you can change the data type of a scalar input to `double` or add an explicit cast to type `double` in the function call. For example, you can change a function call from `m1.function_name(i)` to `m1.function_name(double(i))`.

Use of Output Data with Change Detection Operators Disallowed for Initialize-Outputs-at-Wakeup Mode

If you enable the option **Initialize Outputs Every Time Chart Wakes Up** in the Chart properties dialog box, do not use output data as the first argument of a change detection operator. When this option is enabled, the change detection operator returns `false` if the first argument is an output data. In this case, there is no reason to perform change detection. (For details, see “Using Change Detection in Actions” in the *Stateflow User’s Guide*.)

Compatibility Considerations

Previously, Stateflow software would allow the use of output data with change detection operators when you enable the option **Initialize Outputs Every Time Chart Wakes Up**. This behavior has changed. Stateflow charts created in earlier versions now generate errors during parsing to prevent such behavior.

Parsing a Stateflow Chart Without Simulation No Longer Detects Unresolved Symbol Errors

To detect unresolved symbol errors in a chart, you must start simulation or update the model diagram. When you parse a chart without simulation or diagram updates, the Stateflow parser does not have access to all the information needed to check for unresolved symbols, such as exported graphical functions from other charts and enumerated data types. Therefore,

the parser now skips unresolved symbol detection to avoid generating false error messages. However, if you start simulation or update the model diagram, you invoke the model compilation process, which has full access to the information needed, and unresolved symbols are flagged.

For more information, see “Parsing Stateflow Charts” and “Resolving Symbols” in the *Stateflow User’s Guide*.

Generation of a Unique Name for a Copied State Limited to States Without Default Labels

If you copy and paste a state in the Stateflow Editor, a unique name is generated for the new state only if the original state does not use the default ? label. For more information, see “Copying Graphical Objects” in the *Stateflow User’s Guide*.

New Configuration Set Created When Loading Nonlibrary Models with an Active Configuration Reference

When you load a nonlibrary model with an active configuration reference for Stateflow charts or Truth Table blocks, a copy of the referenced configuration set is created and attached to your model. The new configuration set is marked active, and the configuration reference is marked inactive. This behavior does not apply to library models.

For information about using configuration references, see “Referencing Configuration Sets” in the *Simulink User’s Guide*.

Compatibility Considerations

In previous releases, you could load a nonlibrary model with an active configuration reference for Stateflow charts or Truth Table blocks. In R2008b, the configuration reference becomes inactive after you load the model, and a warning message appears to explain this change in behavior. To restore the configuration reference to its original active state, follow the instructions in the warning message.

For more information, see “Configuration References for Models with Older Simulation Target Settings” in the *Simulink User’s Guide*.

Version 7.1.1 (R2008a+) Stateflow and Stateflow Coder Software

This table summarizes what's new in V7.1.1 (R2008a+):

New Features and Changes	Version Compatibility Considerations	Fixed Bugs and Known Problems
No	No	Bug Reports Includes fixes

Version 7.1 (R2008a) Stateflow and Stateflow Coder Software

This table summarizes what's new in V7.1 (R2008a):

New Features and Changes	Version Compatibility Considerations	Fixed Bugs and Known Problems
Yes Details below	Yes—Details labeled as Compatibility Considerations , below. See also Summary.	Bug Reports Includes fixes

New features and changes introduced in this version are:

- “Support for Data with Complex Data Types” on page 95
- “Support for Functions with Multiple Outputs” on page 95
- “Bidirectional Traceability for Navigating Between Generated Code and Stateflow Objects” on page 95
- “New Temporal Logic Notation for Defining Absolute Time Periods” on page 96
- “New temporalCount Operator for Counting Occurrences of Events” on page 96
- “Using a Specific Path to a State for the in Operator” on page 96
- “Enhanced MISRA C Code Generation Support” on page 97
- “Enhanced Folder Structure for Generated Code” on page 97
- “Code Optimization for Simulink Blocks and Stateflow Charts” on page 97
- “New fitToView Method for Zooming Objects in the Stateflow Editor” on page 97
- “Generation of a Unique Name for a Copied State” on page 98
- “New Font Size Options in the Stateflow Editor” on page 98
- “New Fixed-Point Details Display in the Data Properties Dialog Box” on page 98

- ““What’s This?” Context-Sensitive Help Available for Simulink Configuration Parameters Dialog” on page 98
- “Specifying Scaling Explicitly for Fixed-Point Data” on page 99
- “Use of Data Store Memory Data in Entry Actions and Default Transitions Disallowed for Execute-at-Initialization Mode” on page 100
- “Enhanced Warning Message for Target Hardware That Does Not Support the Data Type in a Chart” on page 100
- “Detection of Division-By-Zero Violations When Debugger Is Off” on page 100

Support for Data with Complex Data Types

Stateflow charts support data with complex data types. You can perform basic arithmetic (addition, subtraction, and multiplication) and relational operations (equal and not equal) on complex data in Stateflow action language. You can also use complex input and output arguments for Embedded MATLAB functions in your chart.

For more information, see “Using Complex Data in Stateflow Charts” in the Stateflow documentation.

Support for Functions with Multiple Outputs

You can specify more than one output argument in graphical functions, truth table functions, and Embedded MATLAB functions. Previously, you could specify only one output for these types of functions.

For more information, see “Using Graphical Functions to Extend Actions”, “Truth Table Functions”, and “Using MATLAB Functions in Stateflow Charts” in the Stateflow documentation.

Bidirectional Traceability for Navigating Between Generated Code and Stateflow Objects

In previous releases, Real-Time Workshop Embedded Coder software provided bidirectional traceability only for Simulink blocks. In R2008a, bidirectional traceability works between generated code and Stateflow objects.

For embedded real-time (ERT) based targets, you can choose to include traceability comments in the generated code. Using the enhanced traceability report, you can click hyperlinks to go from a line of code to its corresponding object in the model. You can also right-click an object in your model to find its corresponding line of code.

For more information, see “Traceability of Stateflow Objects in Generated Code” in the Stateflow documentation.

New Temporal Logic Notation for Defining Absolute Time Periods

You can use a keyword named `sec` to define absolute time periods based on simulation time of your chart. Use this keyword as an input argument for temporal logic operators, such as `after`.

For more information, see “Using Temporal Logic in State Actions and Transitions” in the Stateflow documentation.

New temporalCount Operator for Counting Occurrences of Events

You can use the `temporalCount` operator to count occurrences of explicit or implicit events. This operator can also count the seconds of simulation time that elapse during chart execution.

For more information, see “Using Temporal Logic in State Actions and Transitions” and “Counting Events” in the Stateflow documentation.

Using a Specific Path to a State for the in Operator

When you use the `in` operator to check state activity, you must use a specific path to a state. The operator performs a localized search for states that match the given path by looking in each level of the Stateflow hierarchy between its parent and the chart level. The operator does not do an exhaustive search of all states in the entire chart. If there are no matches or multiple matches, a warning message appears and chart execution stops. The search algorithm must find a unique match to check for state activity.

For more information, see “Checking State Activity” in the Stateflow documentation.

Compatibility Considerations

Previously, you could use a non-specific path to a state as the argument of the `in` operator, because the operator performed an exhaustive search for all states in the chart that match the given path. In the case of multiple matches, a filtering algorithm broke the tie to produce a unique state for checking activity. This behavior has changed. Stateflow charts created in earlier versions may now generate errors if they contain an `in` operator with a non-specific path to a state.

Enhanced MISRA C Code Generation Support

Stateflow Coder software detects missing `else` statements in `if-else` structures for generated code. This enhancement supports MISRA C rule 14.10.

Enhanced Folder Structure for Generated Code

Code files for simulation and code generation targets now reside in the `slprj` folder. Previously, generated code files resided in the `sfprj` folder.

For more information, see “Generated Code Files for Targets You Build” in the Stateflow documentation.

Code Optimization for Simulink Blocks and Stateflow Charts

In R2008a, Real-Time Workshop code generation is enhanced to enable cross-product optimizations between Simulink blocks and Stateflow charts.

New `fitToView` Method for Zooming Objects in the Stateflow Editor

You can use the API object method `fitToView` to zoom in on graphical objects in the Stateflow Editor.

For more information, see “Zooming a Chart Object Using the Stateflow API” in the Stateflow documentation.

Generation of a Unique Name for a Copied State

If you copy and paste a state in the Stateflow Editor, a unique name automatically appears for the new state.

For more information, see “Copying Graphical Objects” in the Stateflow documentation.

New Font Size Options in the Stateflow Editor

In the Stateflow Editor, the font sizes in the **Edit > Set Font Size** menu now include 2-point, 4-point, and 50-point. These font options are also available by right-clicking a text item and choosing **Font Size** from the context menu.

For more information, see “Specifying Colors and Fonts in a Chart” in the Stateflow documentation.

New Fixed-Point Details Display in the Data Properties Dialog Box

The Data Type Assistant in the Data properties dialog box now displays status and details of fixed-point data types.

For more information, see “Showing Fixed-Point Details” in the Stateflow documentation.

“What’s This?” Context-Sensitive Help Available for Simulink Configuration Parameters Dialog

R2008a introduces “What’s This?” context-sensitive help for parameters that appear in the Simulink Configuration Parameters dialog. This feature provides quick access to a detailed description of the parameters, saving you the time it would take to find the information in the Help browser.

To use the “What’s This?” help, do the following:

- 1 Place your cursor over the label of a parameter.
- 2 Right-click. A **What's This?** context menu appears.

For example, the following figure shows the **What's This?** context menu appearing after a right-click on the **Start time** parameter in the **Solver** pane.



- 3 Click **What's This?** A context-sensitive help window appears showing a description of the parameter.

Specifying Scaling Explicitly for Fixed-Point Data

When you define a fixed-point data type in a Stateflow chart, you must specify scaling explicitly in the **General** pane of the Data properties dialog box. For example, you cannot enter an incomplete specification such as `fixdt(1,16)` in the **Type** field. If you do not specify scaling explicitly, you will see an error message when you try to simulate your model.

To ensure that the data type definition is valid for fixed-point data, perform one of these steps in the **General** pane of the Data properties dialog box:

- Use a predefined option in the **Type** drop-down menu.
- Use the Data Type Assistant to specify the **Mode** as fixed-point.

For more information, see “Defining Data” in the Stateflow documentation.

Compatibility Considerations

Previously, you could omit scaling in data type definitions for fixed-point data. Such data types were treated as integers with the specified sign and word length. This behavior has changed. Stateflow charts created in earlier versions may now generate errors if they contain fixed-point data with no scaling specified.

Use of Data Store Memory Data in Entry Actions and Default Transitions Disallowed for Execute-at-Initialization Mode

If you enable the option **Execute (enter) Chart At Initialization** in the Chart properties dialog box, you cannot assign data store memory data in state entry actions and default transitions that execute the first time that the chart awakens. You can use data store memory data in state during actions, inner transitions, and outer transitions without any limitations.

Previously, assigning data store memory in state entry actions and default transitions with this option enabled would cause a segmentation violation.

Enhanced Warning Message for Target Hardware That Does Not Support the Data Type in a Chart

If your target hardware does not support the data type you use in a Stateflow chart, a warning message appears when you generate code for that chart. This message appears only if the unsupported data type is present in the chart.

Previously, a warning message appeared if the target hardware did not support a given data type, even when the unsupported data type was not actually used in the chart.

Detection of Division-By-Zero Violations When Debugger Is Off

Stateflow simulation now detects division-by-zero violations in a chart, whether or not you enable the debugger.

Previously, disabling the debugger would prevent detection of division-by-zero violations, which caused MATLAB sessions to crash.

Version 7.0.1 (R2007b+) Stateflow and Stateflow Coder Software

This table summarizes what's new in V7.0.1 (R2007b+):

New Features and Changes	Version Compatibility Considerations	Fixed Bugs and Known Problems
No	No	Bug Reports Includes fixes

Version 7.0 (R2007b) Stateflow and Stateflow Coder Software

This table summarizes what's new in V7.0 (R2007b):

New Features and Changes	Version Compatibility Considerations	Fixed Bugs and Known Problems
Yes Details below	Yes—Details labeled as Compatibility Considerations , below. See also Summary.	Bug Reports Includes fixes

New features and changes introduced in this version are:

- “Enhanced Continuous-Time Support with Zero-Crossing Detection” on page 103
- “New Super Step Feature for Modeling Asynchronous Semantics” on page 103
- “Support for Inheriting Data Properties from Simulink Signal Objects Via Explicit Resolution” on page 103
- “Common Dialog Box Interface for Specifying Data Types in Stateflow Charts and Simulink Models” on page 104
- “Support for Animating Stateflow Charts in Simulink External Mode” on page 105
- “Support for Target Function Library” on page 106
- “Support for Fixed-Point Parameters in Truth Table Blocks” on page 106
- “Support for Using Custom Storage Classes to Control Stateflow Data in Generated Code” on page 106
- “Loading 2007b Stateflow Charts in Earlier Versions of Simulink Software” on page 107
- “Bug Fixed for the History Junction” on page 107

Enhanced Continuous-Time Support with Zero-Crossing Detection

Using enhanced support for modeling continuous-time systems, you can:

- Detect zero crossings on state transitions, enabling accurate simulation of dynamic systems with modal behavior.
- Support the definition of continuous state variables and their derivatives for modeling hybrid systems as state charts with embedded dynamic equations

For more information, see “Modeling Continuous-Time Systems in Stateflow Charts” in the Stateflow documentation.

Compatibility Considerations

Previously, Stateflow charts implemented continuous time simulation without maintaining mode in minor time steps or detecting zero crossings. Accurate continuous-time simulation requires several constraints on the allowable constructs in Stateflow charts. Charts created in earlier versions may generate errors if they violate these constraints.

New Super Step Feature for Modeling Asynchronous Semantics

Using a new super step property, you can enable Stateflow charts to take multiple transitions in each simulation time step. For more information, see “Execution of a Chart with Super Step Semantics” in the Stateflow documentation.

Support for Inheriting Data Properties from Simulink Signal Objects Via Explicit Resolution

You can use a new data property, **Data Must Resolve to Simulink signal object**, to allow local and output data to explicitly inherit the following properties from `Simulink.Signal` objects of the same name that you define in the base workspace or model workspace:

- Size

- Type
- Complexity
- Minimum value
- Maximum value
- Initial value
- Storage class (in Real-Time Workshop generated code)

For more information, see “Resolving Data Properties from Simulink Signal Objects” in the Stateflow documentation.

Compatibility Considerations

Stateflow software no longer performs implicit signal resolution, a feature supported for output data only. In prior releases, Stateflow software attempted to resolve outputs implicitly to inherit the size, type, complexity, and storage class of `Simulink.Signal` objects of the same name that existed in the base or model workspace. No other properties could be inherited from Simulink signals.

Now, local as well as output data can inherit additional properties from `Simulink.Signal` objects, but you must enable signal resolution explicitly. In models developed before Version 7.0 (R2007b) that rely on implicit signal resolution, Stateflow charts may not simulate or may generate code with unexpected storage classes. In these cases, Stateflow software automatically disables implicit signal resolution for chart outputs and generates a warning at model load time about possible incompatibilities. Before loading such a model, make sure you have loaded into the base or model workspace all `Simulink.Signal` objects that will be used for explicit resolution. After loading, resave your model in Version 7.0 (R2007b) of Stateflow software.

Common Dialog Box Interface for Specifying Data Types in Stateflow Charts and Simulink Models

You can use the same dialog box interface for specifying data types in Stateflow charts and Simulink models. For more information, see “Setting Data Properties in the Data Dialog Box” in the Stateflow documentation.

Support for Animating Stateflow Charts in Simulink External Mode

When running Simulink models in external mode, you can now animate states, and view Stateflow test points in floating scopes and signal viewers. For more information, see “Animating Stateflow Charts” in the Stateflow documentation.

These Real-Time Workshop targets support Stateflow chart animation in external mode:

Real-Time Workshop Target	External Mode Support	Support for Stateflow Chart Animation in External Mode
GRT (generic real-time)	R10	Yes
VxWorks® / Tornado®	R10	Yes
RTWin (Real-Time Windows)	R11	Yes
xPC	R12 *	No **
ERT (embedded real-time)	R13	Yes
RSIM (rapid simulation)	R13	Yes
MPC5xx	R2007a	No
C166®	R2007a	No
TI's C6000™	R2007a	Yes
TI's C2000™	R2007b	No
Rapid Accelerator	R2007b	Yes
dSPACE® RTI	R12.1 ***	No

Note

- * xPC supported parameter download only from release R12 through R14sp3. As of release R2006a, xPC supports signal upload as well.
 - ** xPC has documented support for `xpcexplr` to display the boolean value of test point Stateflow states. You can also retrieve the state value via the xPC command-line API. There is no documented support for animating a Stateflow chart that is running in Simulink external mode.
 - *** dSPACE RTI supports parameter download only.
-

Support for Target Function Library

Stateflow Coder code generation software supports the Target Function Library published by Real-Time Workshop Embedded Coder software, allowing you to map a subset of built-in math functions and arithmetic operators to target-specific implementations. For more information, see “Replacing Operators with Target Functions” and “Replacement of C Math Library Functions with Target-Specific Implementations” in the Stateflow documentation.

Support for Fixed-Point Parameters in Truth Table Blocks

You can now define fixed-point parameters in Truth Table blocks.

Support for Using Custom Storage Classes to Control Stateflow Data in Generated Code

You can use custom storage classes to control Stateflow local data, output data, and data store memory in Real-Time Workshop generated code.

For more information, see “Creating and Using Custom Storage Classes” in the Real-Time Workshop Embedded Coder User’s Guide.

Loading 2007b Stateflow Charts in Earlier Versions of Simulink Software

If you save a Stateflow chart in release 2007b, you will not be able to load the corresponding model in earlier versions of Simulink software. To work around this issue, save your model in the earlier version before loading it, as follows:

- 1 In the Simulink model window, select **File > Save As**.
- 2 In the **Save as type** field, select the version in which you want to load the model.

For example, if you want to load the model in the R2007a version of Simulink software, select **Simulink 6.6/R2007a Models (#.mdl)**.

Bug Fixed for the History Junction

In previous releases, there was a bug where a default transition action occurred more than once if you used a history junction in a state containing only a single substate. The history junction did not remember the state's last active configuration unless there was more than one substate. This bug has been fixed.

Version 6.6.1 (R2007a+) Stateflow and Stateflow Coder Software

This table summarizes what's new in V6.6.1 (R2007a+):

New Features and Changes	Version Compatibility Considerations	Fixed Bugs and Known Problems
No	No	Bug Reports Includes fixes

Version 6.6 (R2007a) Stateflow and Stateflow Coder Software

This table summarizes what's new in Version 6.6 (R2007a):

New Features and Changes	Version Compatibility Considerations	Fixed Bugs and Known Problems
Yes Details below	No	Bug Reports Includes fixes

New features and changes introduced in this version are described here:

New Operators for Detecting Changes in Data Values

You can use three new operators for detecting changes in Stateflow data values between time steps:

- hasChanged
- hasChangedFrom
- hasChangedTo

For more information, see “Using Change Detection in Actions” in the Stateflow documentation.

Elimination of “goto” Statements from Generated Code

The code generation process automatically eliminates goto statements from generated code to produce structured, readable code that better supports MISRA C rules.

Version 6.5 (R2006b) Stateflow and Stateflow Coder Software

This table summarizes what's new in Version 6.5 (R2006b):

New Features and Changes	Version Compatibility Considerations	Fixed Bugs and Known Problems
Yes Details below	No	Bug Reports Includes fixes

New features and changes introduced in this version are described here:

Support for Mealy and Moore Charts

You can use a new chart property to constrain finite state machines to use either Mealy or Moore semantics. You can create Stateflow charts that implement pure Mealy or Moore semantics as a subset of Stateflow chart semantics. Mealy and Moore charts can be used in simulation and code generation of C and hardware description language (HDL). See “Building Mealy and Moore Charts” in the Stateflow documentation.

New Structure Data Type Provides Support for Buses

You can use a structure data type to interface Simulink bus signals with Stateflow charts and truth tables, and to define local and temporary structures. You specify Stateflow structure data types as `Simulink.Bus` objects. See “Working with Structures and Bus Signals in Stateflow Charts” in the Stateflow documentation.

Note Signal logging is not available for Stateflow structures.

Custom Integer Sizes

Integers are no longer restricted in size to 8, 16, or 32 bits. You can now enter word lengths of any size from one to 32 bits.

Version 6.4.1 (R2006a+) Stateflow and Stateflow Coder Software

This table summarizes what's new in V6.4.1 (R2006a+):

New Features and Changes	Version Compatibility Considerations	Fixed Bugs and Known Problems
No	No	Bug Reports at Web site

Version 6.4 (R2006a) Stateflow and Stateflow Coder Software

This table summarizes what's new in V6.4 (R2006a):

New Features and Changes	Version Compatibility Considerations	Fixed Bugs and Known Problems
Yes Details below	No	Bug Reports at Web site

New features and changes introduced in this version are described here:

Option to Initialize Outputs When Chart Wakes Up

You can use a new chart option **Initialize Outputs Every Time Chart Wakes Up**. Use this to initialize the value of outputs every time a chart wakes up, not only at time 0 (see “Setting Properties for a Single Chart” in the online documentation). When you enable this option, outputs are reset whenever the chart is triggered, whether by a function call, edge trigger, or clock tick. The option ensures that outputs are defined in every chart execution and prevents latching of outputs.

Ability to Customize the Stateflow User Interface

You can use MATLAB code to perform the following customizations of the standard Stateflow user interface:

- Add items and submenus that execute custom commands in the Stateflow Editor
- Disable or hide menu items in the Stateflow Editor

See “Customizing the Stateflow Editor” in the online documentation.

Using the MATLAB Workspace Browser for Debugging Stateflow Charts

The MATLAB Workspace Browser is no longer available for debugging Stateflow charts. To view Stateflow data values at breakpoints during simulation, use the MATLAB command line or the Browse Data window in the Stateflow Debugger.

Chart and Truth Table Blocks Require C Compiler for 64-Bit Windows Operating Systems

No C compiler ships with Stateflow software for 64-bit Windows operating systems. Because Stateflow software performs simulation through code generation, you must supply your own MEX-supported C compiler if you wish to use Stateflow Chart and Truth Table blocks. The C compilers available at the time of this writing for 64-bit Windows operating systems include the Microsoft® Platform SDK and the Microsoft Visual Studio development system.

Version 6.3 (R14SP3) Stateflow and Stateflow Coder Software

This table summarizes what's new in V6.3 (R14SP3):

New Features and Changes	Version Compatibility Considerations	Fixed Bugs and Known Problems
Yes Details below	No	Bug Reports at Web site

New features and changes introduced in this version are organized by these topics:

- “Data Handling” on page 114
- “Truth Table Enhancements” on page 115
- “API Enhancements” on page 116
- “Greater Usability” on page 117

Data Handling

Sharing Global Data Between Simulink Models and Stateflow Charts

This release provides an interface that gives Stateflow charts access to global variables in Simulink models. A Simulink model implements global variables as *data stores*, created either as data store memory blocks or instances of `Simulink.Signal` objects. Now Stateflow charts can share global data with Simulink models by reading and writing data store memory symbolically using the Stateflow action language. See “Sharing Global Data with Simulink Models” in the Stateflow documentation.

Enhancements to Data Properties Dialog Box

The Stateflow data properties dialog box has been enhanced to:

- Accommodate fixed-point support

- Support parameter expressions in data properties

Stateflow charts now accept Simulink parameters or parameters defined in the MATLAB workspace for the following properties in the data properties dialog box:

- Initial Value
- Minimum
- Maximum

Entries for these parameters can be expressions that meet the following requirements:

- Expressions must evaluate to scalar values.
- For library charts, the expressions for these properties must evaluate to the same value for all instances of the library chart. Otherwise, a compile-time error appears.

See “Defining Data” in the Stateflow documentation.

Truth Table Enhancements

Using Embedded MATLAB Action Language in Truth Tables

You can now use the Embedded MATLAB action language in Stateflow truth tables. Previously, you were restricted to the Stateflow action language. The Embedded MATLAB action language offers the following advantages:

- Supports the use of control loops and conditional constructs in truth table actions
- Provides direct access to all MATLAB functions

See “Truth Table Functions” in the Stateflow documentation.

Embedded MATLAB Truth Table Block in Simulink Models

A truth table function block is now available as an element in the Simulink library. With this new block, you can call a truth table function directly from

your Simulink model. Previously, there was a level of indirection. Your Simulink model had to include a Stateflow block that called a truth table function.

The Simulink truth table block supports the Embedded MATLAB language subset only. You must have a Stateflow software license to use the Truth Table block in Simulink models.

See “Truth Table Functions” in the Stateflow documentation.

API Enhancements

Retrieving Object Handles of Selected Stateflow Objects

A new Stateflow function `sfgco` retrieves the object handles of the most recently selected objects in a Stateflow chart.

Default Case Handling in Generated Code

Stateflow Coder software now implements a default case in generated switch statements to account for corrupted memory at runtime. In this situation, the default case performs a recovery operation by calling the child entry functions of the state whose variable is out of bounds. Reentering the state resets the variable to a valid value.

This recovery operation is *not* performed if a Stateflow chart contains any of the following elements:

- Local events
- Machine-parented events
- Implicit events, such as state entry, state exit, and data change

If any of these conditions exist in a chart, state machine processing can become recursive, causing variables to temporarily assume values that are out of range. However, when processing finishes, the variables return to valid values.

Greater Usability

Specifying Execution Order of Parallel States Explicitly

You can specify the execution order of parallel states explicitly in Stateflow charts. Previously, the execution order of parallel states was governed solely by implicit rules, based on geometry. A disadvantage of implicit ordering is that it creates a dependency between design layout and execution priority. When you rearrange parallel states in your chart, you may inadvertently change order of execution and affect simulation results. Explicit ordering gives you more control over your designs. See “Execution Order for Parallel States” in the Stateflow documentation.

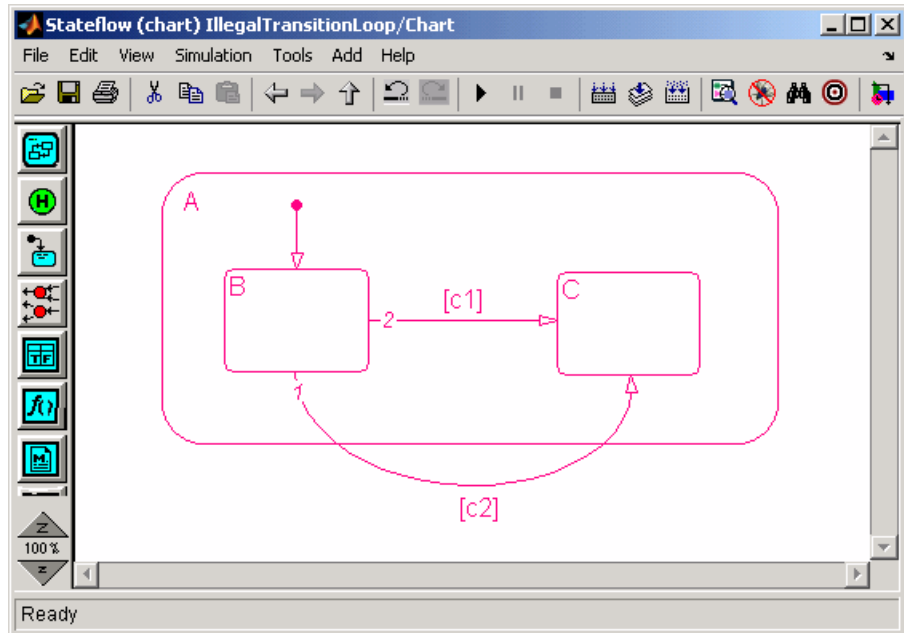
Hyperlinking Simulink Subsystems from Stateflow Events

You can now directly hyperlink the Simulink subsystem connected to a Stateflow output event by using the context menu option **Explore** for any state or transition broadcasting event. See “Accessing Simulink Subsystems Triggered By Output Events” in the Stateflow documentation.

Warnings for Transitions Looping Out of Logical Parent

A common modeling error is to create charts where a transition loops out of the logical parent of the source and destination objects. The *logical parent* is either a common parent of the source and destination objects, or if there is no common parent, the nearest common ancestor.

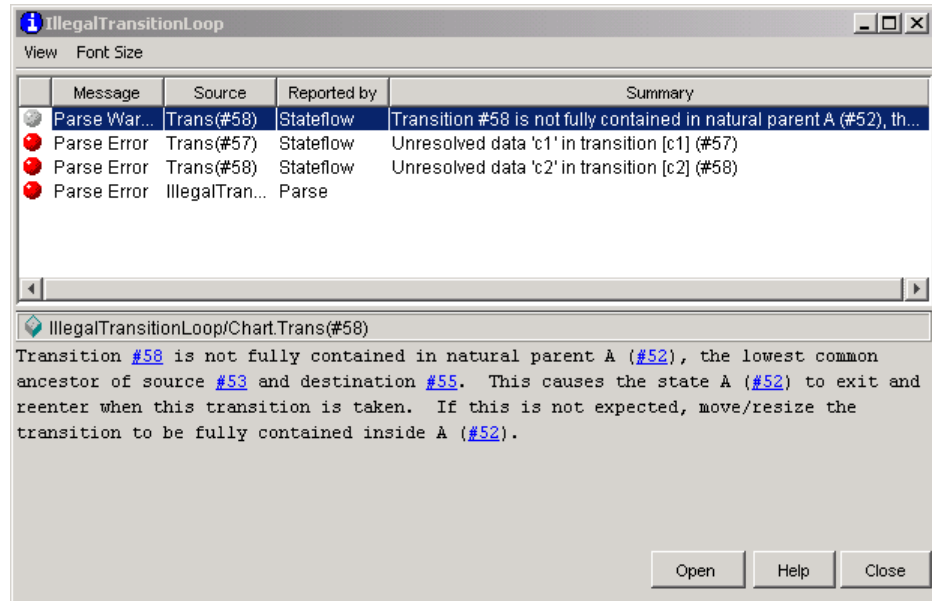
Consider the following example:



In this chart, transition 1 loops outside of logical parent A, which is the common parent of transition source B and destination C.

This type of illegal looping causes the parent to deactivate and then reactivate. In the previous example, if transition 1 is taken, the exit action of A executes and then the entry action of A executes. Executing these actions unintentionally can cause side effects.

This situation is now detected as a parser warning that indicates how to fix the model. Here is the warning associated with the earlier example:



Differentiating Syntax Elements in the Stateflow Action Language

You can now use color highlighting to differentiate syntax elements in the Stateflow action language. Syntax highlighting is enabled by default. To specify highlighting preferences, select **Highlighting Preferences** from the chart **Edit** menu, and then click the colors you want to change. See “Differentiating Syntax Elements in the Stateflow Action Language” in the Stateflow documentation.

Stateflow Chart Notes Click Function

This release introduces enhancements to Stateflow chart notes. The chart notes property dialog box now has a **ClickFcn** section, which includes the following options:

- Use display text as click callback check box
- ClickFcn edit field

See “Annotations Properties Dialog Box” in the Simulink documentation for a description of these new options.

Chart Viewing Enhancements

This release adds the following chart viewing enhancements:

- “View Command History” on page 120
- “New View Menu Viewing Commands” on page 120
- “New Shortcut Menu Commands” on page 120
- “View Command Shortcut Keys” on page 121

View Command History. This release enhances the chart viewing commands. You can now maintain a history of the chart viewing commands, i.e., pan and zoom, that you execute for each chart window. The history allows you to quickly return to a previous view in a window, using commands for traversing the history (see “New View Menu Viewing Commands” on page 120).

New View Menu Viewing Commands. This release adds the following viewing commands to the chart’s View menu:

- **View > Back**
Displays the previous view in the view history.
- **View > Forward**
Displays the next view in the view history.
- **View > Go To Parent**
Goes to the parent of the current subchart.

New Shortcut Menu Commands. The shortcut menu now has **Forward** and **Go To Parent** commands. The **Back** command has been moved to be with these new commands. These commands are the same as those described in “New View Menu Viewing Commands” on page 120.

View Command Shortcut Keys. This release adds the following viewing command shortcut keys for users running the UNIX® operating system or the Windows operating system:

Shortcut Key	Command
d or Ctrl+Left Arrow	Pan left
g or Ctrl+Right Arrow	Pan right
e or Ctrl+Up Arrow	Pan up
c or Ctrl+Down Arrow	Pan down
b	Go back in pan/zoom history
t	Go forward in pan/zoom history

Note These shortcut keys, together with the existing zoom shortcuts (**r** or **+** for zoom in, **v** or **-** for zoom out), allow you to pan and zoom a model with one hand (your left hand).

Version 6.2 (R14SP2) Stateflow and Stateflow Coder Software

This table summarizes what's new in V 6.2 (R14SP2):

New Features and Changes	Version Compatibility Considerations	Fixed Bugs and Known Problems
Yes Details below	No	Bug Reports at Web site

New features introduced in this version are described here:

User-Specified Transition Execution Order

Stateflow charts now support a mode where you can explicitly specify the testing/execution order of transitions sourced by states and junctions. This is called the Explicit mode. The Implicit mode retains the old functionality, where the transition execution order is determined based on a set of rules (parent depth, triggered/conditional properties, and geometry around the source). In addition, the transition numbers, according to their execution order, are now displayed on the Stateflow Editor at all times, both in Implicit and Explicit modes.

Note that the old models created in earlier releases load in Implicit mode, thus yielding identical simulation results. Any new charts created are in Implicit mode by default. To change to Explicit mode, use the Chart Properties dialog box.

Enhanced Integration of Stateflow Library Charts with Simulink Models

Charts in library models do not require full specification of data type and size. During simulation, library charts can inherit data properties from the main model in which you link them.

This enhancement also affects code generation in library charts. When building simulation and code generation targets, only the library charts that you link in the main model participate in code generation.

Compatibility Considerations

In previous releases, library charts required complete specification of data properties. You had to enter these properties for both the library chart and the main model before simulation.

Stateflow Charts and Embedded MATLAB Functions Support Simulink Data Type Aliases

Data in Stateflow charts and Embedded MATLAB functions may now be explicitly typed using the same aliased types that a Simulink model uses. Also, inherited and parameterized data types in Stateflow charts and Embedded MATLAB functions support propagation of aliased types. However, code generated for Stateflow charts and Embedded MATLAB functions does not yet preserve aliased data types.

Fixed-Point Override Supported for Library Charts

You can now specify fixed-point override for Stateflow library charts.

Version 6.1 (R14SP1) Stateflow and Stateflow Coder Software

This table summarizes what's new in V6.1 (R14SP1):

New Features and Changes	Version Compatibility Considerations	Fixed Bugs and Known Problems
Yes Details below	No	Bug reports not available

New features and changes introduced in this version are described here:

Code Generation For Embedded Targets Fails for Charts with No Output Data

In this release, embedded code generation sometimes fails when the model contains one or more Stateflow charts with no output data, and one or more testpointed local data objects or states. The error message displayed in the MATLAB Command Window has the following signature:

```
Error: File: d:\R14\matlab\rtw\c\tlc\mw\capi.tlc Line: 359
Column: 44
Undefined identifier constString
Error: File: d:\R14\matlab\rtw\c\tlc\mw\capi.tlc Line: 359
Column: 62
The + operator only works on numeric arguments
```

To work around this problem, create a dummy (unused) output data object for the charts that have no output data.

Version 6.0 (R14) Stateflow and Stateflow Coder Software

This table summarizes what's new in V6.0 (R14):

New Features and Changes	Version Compatibility Considerations	Fixed Bugs and Known Problems
Yes Details below	Yes—Details labeled as Compatibility Considerations , below. See also Summary.	“Bug Fixes” on page 136

New features and changes introduced in this version are:

- “Code Generation” on page 125
- “Data Handling” on page 129
- “API Enhancements” on page 131
- “Enhanced Support for Functions” on page 132
- “Greater Usability” on page 134
- “Bug Fixes” on page 136

Code Generation

Multibyte Comment Characters in Generated Code

You can optionally include Stateflow action language comments in generated code for an embedded target or a custom target. When you do this, multibyte characters in Stateflow action language comments are preserved as multibyte characters in the generated code. This means that you can have comments in code with characters from non-English alphabets such as Japanese Kanji or Chinese Hanzi characters.

See “Comment Symbols, %, //, /*” in the Stateflow documentation for more information on inserting comments into Stateflow action language and optionally into Stateflow generated code.

Target Configuration Integrated with Simulink Targets

Configuring simulation and code generation targets for the Stateflow blocks in nonlibrary models has been integrated with Simulink target configuration in the Configuration Parameters dialog box. For library models, you still configure targets for Stateflow blocks as you did for previous versions of Stateflow software. This also applies to the configuration of Stateflow custom targets.

For more information on configuring targets, see “Building Targets” in the Stateflow documentation.

Compatibility Considerations. As a result of this change, properties of the old Stateflow code generation target now map to the Simulink target configuration set. Note the following compatibility considerations:

- You must update existing API scripts that modify properties of Stateflow code generation targets.
- Custom code settings are no longer copied from the simulation target to the code generation target for nonlibrary models.

Updating Scripts that Modify Code on Stateflow Code Generation Targets.

If you have existing MATLAB scripts that use the Stateflow programmatic API to set up custom-code settings on the Stateflow code generation target, you must modify these scripts to use the Simulink target configuration set. The following example illustrates how the properties on the old code generation target object map to the new configuration set object.

Here is a sample old script modifying custom code properties of a code generation target (named `rtw`) in Release 13 and earlier:

```
rt = sfroot;
trgt_sfmachine = rt.find('-isa', 'Stateflow.Machine', '-and',
'Name', bdroot);
rtw_target = trgt_sfmachine.find('-isa', 'Stateflow.Target',
'-and', 'Name', 'rtw');
rtw_target.set('UserSources', 'foo.c');
rtw_target.set('CustomCode', '#include "myhdr.h"');
rtw_target.set('UserIncludeDirs', './myincludedir');
rtw_target.set('UserLibraries', 'mylib.lib');
```

```
rtw_target.set('CustomInitializer','call_my_init_fcn()');
rtw_target.set('CustomTerminator','call_my_term_fcn()');
```

Use the following format for scripts in Release 14 and beyond. Modify all appropriate scripts to use this updated convention.

```
configset = getActiveConfigSet(bdroot);
set_param(configset,'CustomSource','foo.c');
set_param(configset,'CustomHeaderCode','#include "myhdr.h"');
set_param(configset,'CustomInclude','./myincludedir');
set_param(configset,'CustomLibrary','mylib.lib');
set_param(configset,'CustomInitializer','call_my_init_fcn()');
set_param(configset,'CustomTerminator','call_my_term_fcn()');
```

Copying Code Settings from the Simulation Target to the Code Generation Target.

In prior versions of Stateflow software, creating a code generation target copied custom code settings from the simulation target to the new code generation target. This is no longer true for nonlibrary models, which configure a code generation target in the Configuration Parameters dialog box. However, for library models, you can create a code generation target that still copies the custom code settings of the Stateflow simulation target.

Custom C++ Code Included with Stateflow Generated Code

With the proper modifications, you can now include custom C++ code with Stateflow generated code. See “Building Targets” in the Stateflow documentation.

Object Descriptions in Generated Code for Embedded Targets

The object descriptions entered in the property dialogs for charts, states, transitions, and graphical functions are now optionally propagated into generated code for embedded targets with a Real-Time Workshop Embedded Coder license. You can enable this option in the Configuration Parameters dialog box as follows:

- 1** In the **Select** pane, select the **Real-Time Workshop** node.
- 2** Under the **Real-Time Workshop** node, select the **Comments** node.

3 In the right properties pane, select **Stateflow object descriptions**.

Unified Code Generation Settings for Simulink Models and Stateflow Charts

All Stateflow code generation settings for Real-Time Workshop code generation are now consolidated into the new Configuration Parameters dialog box. This enables users to specify code generation settings for Simulink models and Stateflow charts in a single location.

In addition, custom code settings (code inclusion, user source files, and so on) are now supported by the Configuration Parameters dialog box, although they can still be entered on the Real-Time Workshop target object. All custom code settings and Stateflow optimization settings from old models are grandfathered into the new Configuration Parameters dialog box at load time.

Faster Real-Time Workshop Code Generation

Code generation consists of two phases. During the first phase, a TLC file is generated from every chart. These TLC files are converted into C code in the second phase. In R13SP1 and prior versions, Stateflow software regenerated these TLC files for charts even when they had not changed from a previous code generation session. In Release 14, the first phase of TLC generation is incremental so that the TLC file for a chart is regenerated only if there is a change in the chart since the last code generation session. This incremental TLC generation significantly improves the speed of Real-Time Workshop code generation for models with a large number of Stateflow charts.

Unified Identifier Naming Scheme in Generated Code

The names of identifiers (variable names, structure names, field names in structures, function names) in the generated code are now uniformly managed for a common look and feel, and to prevent naming conflicts.

Data Handling

Data Type and Size Inheritance from Simulink Block Connections

A Stateflow chart inherits the type and size for input and output data from the signals that connect to them in a Simulink model. This feature minimizes the double data entry that was previously required for defining Stateflow input and output data. To inherit input or output data type from their block connections in a Simulink model, enter `Inherited` for their Type property. To inherit input or output data size from their block connections in a Simulink model, enter `-1` for their Size property.

See “Inheriting Data Types from Simulink Objects” and “Inheriting Input or Output Size from Simulink Signals” in the Stateflow documentation for more detailed descriptions.

Data Sized by Expression

You can use expressions in the Size property for Stateflow data. Expressions can include numeric constants, arithmetic operators, Stateflow data of scope Parameter or Constant, and calls to the MATLAB functions `min`, `max`, and `size`. See “Sizing Stateflow Data” in the Stateflow documentation for more details.

Parameter Scope for Simulink Parameters in Stateflow Charts

You can specify Stateflow constant read-only data that is initialized from the MATLAB workspace by specifying data with the scope Parameter. The MATLAB workspace can include Simulink parameters for masked subsystems that contain the Stateflow block or variables in the MATLAB base workspace. See “Initializing Data from the MATLAB Base Workspace” in the Stateflow documentation for more information.

In previous versions, the goal was to create data of type Constant and enable the Initialize From Workspace property. This action initialized the constant with the value of a variable of the same name in the MATLAB workspace, in this case, a Simulink parameter. This method had several limitations:

- 1 The parameters had to be scalars.

- 2 The parameters were not tunable.
- 3 The Stateflow parameter name resolution did not honor the Simulink name resolution. If a parameter could not be resolved in the immediate mask workspace containing the chart, an error message appeared.
- 4 Library charts that contain the parameters could not participate in code reuse.

All of the preceding limitations are now fixed. Furthermore, all existing models that have constant data initialized from the workspace are automatically redefined with the new `Parameter` scope.

Compatibility Considerations. Existing API scripts looking for Constant data initialized from the workspace must be changed to look for data with the scope `Parameter`, as shown in the following example:

Before R14:

```
d0 = sfm.find('-isa','Stateflow.Data','-and',  
            'Scope','CONSTANT_DATA','-and','InitFromWorkspace',1);
```

After R14:

```
d0 =  
    sfm.find('-isa','Stateflow.Data','-and','Scope','Parameter');
```

Defining Temporary Data for Charts

You can no longer define temporary data at the chart level. Instead, an optimization in Stateflow generated code converts chart parented local data acting as temporary data to temporary data.

Compatibility Considerations. In existing models, temporary data defined for a chart is automatically converted to local data.

Fixed-Point Autoscaling of Stateflow Data

Stateflow fixed-point data now participates in autoscaling for fixed-point numbers in Simulink models. For directions on how to autoscale fixed-point data in Simulink models, see the Simulink® Fixed Point™ documentation.

Compatibility Considerations. The Simulink model override of fixed-point numbers applies in Stateflow charts, with the following exceptions:

- The fixed-point override does not apply for scaled doubles. If you specify this option for an override, an error results.
- The fixed-point override is not supported for Stateflow library charts. Specifying fixed-point override for library charts results in a warning.

Support for Directional Vectors

In Version 5.1.1 (R13SP1) and prior versions, data defined with the size of [1,3] was automatically converted to a nondirectional vector of size 3. In Version 6.0 (R14), the directionality is preserved.

Compatibility Considerations. If the vector data you define is a chart input or output, it is converted to a directional row vector to interface with the Simulink model. This data needs to be accessed as a two-dimensional matrix in Stateflow action language in state and transition labels, for example, as `x[0][1]`.

API Enhancements

Type Casting with `cast` and `type`

You can now use the cast operator `cast` for all Stateflow data types except `m1` and fixed-point data. To make casting easier, you can also use a `type` operator that provides the type of an existing data you can use as an argument in cast operations.

The cast and type operators are documented in the Stateflow documentation.

Writable Dirty Property for API Chart Object

The Dirty property for a Chart object in the Stateflow API is writable. The Dirty property for the Machine object is still read-only (RO).

Enhanced Support for Functions

Embedded MATLAB Functions

You can now use a special subset of the MATLAB programming language in the form of Embedded MATLAB functions. These functions give you the power of MATLAB data, function, and language features that are specially tailored to the tight memory and operating system requirements found in embedded target environments.

Embedded MATLAB functions provide:

- An editing environment for entering Embedded MATLAB function code
- A subset of the MATLAB programming language that you can use in Embedded MATLAB functions. See “Using the MATLAB Function Block” in the Simulink software documentation.
- Embedded MATLAB functions are callable from anywhere on the chart
- Embedded MATLAB functions can call other Embedded MATLAB functions, including truth tables and graphical functions
- Embedded MATLAB functions have access to all chart data (inputs, outputs, locals, and so on)

The new Embedded MATLAB Function block in the User-Defined Functions library for a Simulink model uses the same underlying infrastructure as a Stateflow chart for simulation (through code generation), debugging, and integration with Real-Time Workshop code generation software. This dependency has the following ramifications:

- 1 The simulation settings for the Stateflow simulation target (sfun) apply equally to all Stateflow charts and Embedded MATLAB Function blocks in the model. For example, turning debugging on/off would globally affect the charts as well as Embedded MATLAB Function blocks.

- 2** Some of the compile-time warnings and run-time errors from the Embedded MATLAB Function block mention the Stateflow chart as the source of the warning or error.
- 3** Optimization settings for an embedded target apply equally to Embedded MATLAB Function blocks. These optimization settings appear for the **Optimization** node in the Configuration Parameters dialog box only when a Stateflow block or an Embedded MATLAB Function block is present in the model.
- 4** Selecting the **Rebuild All** button in the Embedded MATLAB Editor or in the Stateflow Editor regenerates the simulation code for all the Stateflow charts and all Embedded MATLAB Function blocks in the model.
- 5** In the Model Explorer, the icon for the library links of Embedded MATLAB Function blocks is identical to the icon used for Stateflow link charts.
- 6** In the Model Explorer, it is possible to copy data objects between Stateflow charts and Embedded MATLAB Function blocks.

Note An Embedded MATLAB Function block transparently shares Stateflow block infrastructure but does not require a Stateflow license.

See “Using MATLAB Functions in Stateflow Charts” in the Stateflow documentation.

Matrix Inputs and Outputs for Graphical Functions

Input and output data sizes for Stateflow graphical functions can now be vectors or two-dimensional matrices. The semantics of the input vector or matrix data are compliant with the MATLAB language semantics *pass-by-value* instead of *pass-by-reference* for the C language.

Greater Usability

Data and State Activity Logging

You can log the values of Stateflow data and the activity of Stateflow states against sampling time during simulation. After simulation, you access the data with a set of object-oriented commands. See “What You Can Log During Chart Simulation” in the Stateflow documentation for a detailed example.

Data and State Monitoring with a Floating Scope

You can now use Simulink floating scope blocks to monitor Stateflow data during simulation. Stateflow data and states now appear in the hierarchy of the Signal Selector dialog box of a floating scope. Selecting them causes them to be displayed in the floating scope at simulation time.

See “Using a Floating Scope to Monitor Data Values and State Activity” in the Stateflow documentation for an example.

Command Line Debugger in the MATLAB Command Window

The Stateflow Debugger Browse Data option is limited to displaying all the elements of a large matrix. The Stateflow Debugger now supports a command-line mode at the MATLAB command prompt. Now when a Stateflow breakpoint is reached, you can type simple expressions at the Stateflow command-line debugger in the MATLAB Command Window to display their value. For example, the following entries compute and display values for parts of the matrix in the MATLAB Command Window:

```
x(2, :)  
x(3,4)+3
```

For details on using the Command Line Debugger, see the Stateflow documentation.

Stateflow Boxes Parent Data

Box objects in Stateflow charts can now parent data. This is useful for encapsulating the design better by limiting the visibility of certain data to a given Box object and its hierarchy. For example, a Box object that parents

data along with graphical functions that manipulate this data can be thought of as an implementation of a singleton class with data and methods.

Stateflow Objects Added to the Model Explorer

The Model Explorer now lists Stateflow objects in its hierarchy of Simulink model objects. In place of the old Stateflow Explorer tool, you can now use the Model Explorer to add and modify data and events to Stateflow objects. For more information on using the Model Explorer with Stateflow objects, see the Stateflow documentation.

Warnings for Missing and Conditional Default Paths

A common modeling error in Stateflow charts is to create states with one of the following:

1 No default transitions

This can cause certain runtime state-inconsistency errors. For example, if a state has substates with no default transition, the state can be active, but no substates can.

2 Default transitions that are all conditional

In this case, if all default transition conditions evaluate to false at runtime, no state can become active.

Code generation during simulation detects both of these cases, and a warning to fix the model appears.

Automatic Upgrade of Stateflow Machines Developed in Previous Versions

When you open models containing Stateflow charts that were developed in earlier versions, Stateflow software automatically upgrades the Stateflow machine to work in the current version. A warning message no longer appears, requiring that you save the model in the current version of Stateflow software.

Trailing 1's Removed After Second Dimension of Array Size

Sizes specified for the third dimension or higher of an array that result in a trailing set of 1's are removed. Here are some examples.

Size Specified by User	Size Specified by Stateflow Software
[2, 3, 1]	[2, 3]
[3, 5, 1, 1, 1]	[3, 5]
[3, 4, 1, 1, 2]	No change
[4, 1]	No change

Compatibility Considerations. For size specifications that use trailing 1's after the second dimension, you must change array indexing in state and transition actions accordingly. For example, if you specify the size of the array `my_array` as [4, 5, 1, 1, 1], you can no longer specify the element as `my_array[2][3][0][0][0]` in an action. Instead, specify the element as `my_array[2][3]`.

Bug Fixes

The following bugs have been fixed in V6.0.

Multi-Instantiated Stateflow Library Charts Generated Incorrect Code

If a Stateflow library chart was instantiated more than once in a model, and if this chart had multiple function-call output events, sometimes the generated code did not compile.

Reenabling a Link to a Subsystem Copied from a Library Corrupted a Model

Reenabling a disabled link to a subsystem copied from a library corrupted the model containing the linked subsystem. This always occurred if the library contained one or more link Stateflow charts or if a copy-and-paste (rather than a drag-and-drop) operation was used to create the library link, that is, if

the subsystem was first copied from the library to the system clipboard (by typing **Ctrl+C** or selecting Copy from the **Simulink Edit** menu).

Clear Commands During Simulation Caused a Segmentation Violation

Executing the MATLAB command `clear all` or `clear mex` during simulation of a model with a Stateflow chart caused a segmentation violation.

Calling MATLAB Functions from Stateflow Charts Caused Erroneous Results

Calling MATLAB functions from Stateflow charts by using either the MATLAB namespace operator `m1` or the function form `m1()` with an argument whose data type was not `double` caused erroneous results.

Version 5.1.1 (R13SP1) Stateflow and Stateflow Coder Software

This table summarizes what's new in V 5.1.1 (R13SP1):

New Features and Changes	Version Compatibility Considerations	Fixed Bugs and Known Problems
Yes Details below	Yes—Details labeled as Compatibility Considerations , below. See also Summary.	No

New features and changes introduced in this version are described here:

Bind Actions

Bind actions bind specified data and events to a state. Data bound to a state can be changed by the actions of that state or its children. Other states and their children are free to read the bound data, but they cannot change it. Events bound to a state can be broadcast only by that state or its children. Other states and their children are free to listen for the bound event, but they cannot broadcast it.

Binding a function call event to a state also binds the function call subsystem that it calls. In this case, the function call subsystem becomes enabled when the binding state is entered and becomes disabled when the binding state is exited.

Bind actions are documented in the Stateflow documentation.

New API Method `idToHandle`

The Stateflow API method `idToHandle` is introduced to accommodate customers using old-style API scripts that use integer IDs for Stateflow objects. `idToHandle` is a method of the Root object that converts the integer ID of a particular Stateflow object into an API handle to the object.

In the following example, the data `objectID` has the value of the ID for a particular Stateflow object, and the API handle `objectHandle` is used to change the name of the object.

```
rt = sroot;  
objectHandle = rt.idToHandle(objectID);  
objectHandle.Name = 'ABC';
```

Code Generation Speed Improved

Code generation now occurs faster than in the previous version, V5.1 (R13+).

Compatibility Considerations

Part of the improvement in code generation speed comes from turning off the display of code generation messages in the MATLAB Command Window. Therefore, you will no longer see these messages in the MATLAB Command Window.

Version 5.1 (R13+) Stateflow and Stateflow Coder Software

This table summarizes what's new in V5.1 (R13+):

New Features and Changes	Version Compatibility Considerations	Fixed Bugs and Known Problems
Yes Details below	No	Bug reports not available

New features and changes introduced in this version are described here:

Truth Tables

You can now represent truth tables in your Stateflow chart. Truth tables provide the convenience of specifying functions with logical behavior in a tabular form without having to draw flow graphs.

Because they are implemented on top of Stateflow graphical functions, Stateflow truth tables provide the following functionality:

- Truth tables can be called from anywhere in the chart
- Truth tables can call other truth tables
- Truth tables can access all of chart data (inputs, outputs, locals)
- Truth tables can broadcast events into Simulink models

Stateflow software provides its own analysis and diagnostics for underspecified and overspecified truth tables and fully integrates truth tables into the Stateflow Debugger and the Model Coverage tool.

See Truth Table Functions in the Stateflow documentation.

New Target Coder Options

You can use the following four new options for generating code for embedded and custom targets:

- **Compact nested if-else using logical AND/OR operators** — Improves readability of generated code by compacting nested if-else statements using logical AND (&&) and OR (|) operators.
- **Recognize if-elseif-else in nested if-else statements** — Improves readability of generated code by recognizing and emitting an if-elseif-else construct in place of deeply nested if-else statements.
- **Replace constant expressions by a single constant** — Improves readability by preevaluating constant expressions and emitting a single constant. Furthermore, this optimization enables elimination of dead code.
- **Minimize array reads using temporary variables** — In certain microprocessors, global array read operations are more expensive than accessing a temporary variable on the stack. Using this option minimizes array reads by using temporary variables when possible.

These coder options are documented in the Stateflow documentation.

Version 5.0 (R13) Stateflow and Stateflow Coder Software

This table summarizes what's new in V5.0 (R13):

New Features and Changes	Version Compatibility Considerations	Fixed Bugs and Known Problems
Yes Details below	Yes—Details labeled as Compatibility Considerations , below. See also Summary.	Bug reports not available

New features and changes introduced in this version are:

- “Data and Event Handling” on page 142
- “New Stateflow API” on page 143
- “Functions and Actions” on page 144
- “Code Generation” on page 145
- “Greater Usability” on page 146

Data and Event Handling

Fixed-Point Data

Stateflow software now supports fixed-point data with the following features:

- Support for fixed-point data with both binary point scaling and slope and bias scaling
- Support for fixed-point operations included comparison, addition, subtraction, multiplication, and division
- Full coupling with input from and output to Simulink models
- Detection of overflow for fixed-point and integer types
- Convenient notation for expressing fixed-point literal constants in action language

- Automatic type promotion rules that select the default result type of an operation for maximum computational efficiency
- Full control for overflow prevention and precision retention using special := assignment operator

See “How Fixed-Point Data Works in Stateflow Charts” in the Stateflow documentation.

Matrix Support for Data Inputs and Outputs

You can now use two-dimensional matrices of any type for data with the scope **Data input from Simulink** or **Data output to Simulink**.

See “Adding Data” in the Stateflow documentation.

m1 Data Type

You can use a new data type called m1. Data of this type is typed internally with the MATLAB type mxArray. This means that you can assign (store) any type of data available in a Stateflow chart to a data of type m1. This includes any type of data defined in a Stateflow chart or returned from the MATLAB workspace with the m1 namespace operator or m1 function.

Array and Matrix Support for m1 Namespace Operator and Function Call

Stateflow software now supports vector arrays and n-dimensional matrices as arguments and return values for the matlab (m1 for short) namespace operator and matlab (m1 for short) function call. Before, only scalar data was supported.

Stateflow Charts Allows Up to 254 Events

You can now define up to 254 events per chart. The previous maximum was 127. If your chart has more than 254 events, an error message appears.

New Stateflow API

The new Stateflow API provides programmatic access to Stateflow objects. Through individual MATLAB commands or scripts of commands, you can manipulate Stateflow objects (machines, charts, states, boxes, functions,

notes, transitions, junctions, data, events, and targets) to perform actions previously available only through Stateflow graphical interfaces. These actions include constructing new charts from scratch and modifying existing ones.

The Stateflow API provides control for the following Stateflow actions:

- Search for and find existing Stateflow objects, including charts, at any level of containment
- Set the triggering behavior of new or existing charts
- Create new Stateflow objects within charts with complete control over their positioning, scope, containment, and decomposition (states)
- Set the properties for all Stateflow objects
- Copy and paste Stateflow objects from one location to another
- Delete existing Stateflow objects
- Modify the graphical appearance of all Stateflow objects
- Parse Stateflow charts
- Change the debugging (simulation) behavior for simulation targets
- Build Stateflow simulation targets
- Change the deployment properties for Stateflow nonsimulation targets
- Build, compile, or generate code for other targets including embedded targets

This feature is documented in “Using the API” in the Stateflow API documentation.

Functions and Actions

Any Chart or Library Chart Can Export a Function

Any chart or library chart can now export a graphical function and any other chart or library chart can call it, as long as the caller and the called are both accessible through the same main model.

Trailing F Specifier for Single-Precision Floating-Point Numbers

Stateflow action language now recognizes a trailing F for specifying single-precision floating-point numbers, as in the action statement `x = 4.56F;`. In Stateflow action language, if a trailing F does not appear with a number, it is assumed to be double-precision. Specifying single-precision numbers allows you to save memory in generated code.

Error on Transition Action Into Junction with Following Condition

Transition actions for transitions into junctions with condition actions that follow as part of a state-to-state path are now flagged by an error. The error indicates that the execution of these actions is in reverse order to the apparent segment order in the chart.

Compatibility Considerations. You can modify existing code using the workaround documented in the Stateflow documentation.

Code Generation

User Comments Included in Generated Code

You can include comments you enter in the action language of Stateflow charts in generated code for embedded and custom targets. This option is enabled by default.

See “Building Targets” in the Stateflow documentation.

For-Loops Emitted in Generated Code

The Stateflow code generator detects and emits for-loops when applicable. In previous versions, the code generator always emitted while-loops.

Enhanced Integration with Real-Time Workshop Code Generation Software

The code generated for Stateflow blocks is seamlessly integrated with code generated for other Simulink blocks, leading to more efficient and readable code.

Graphical Function Inlining in Generated Code

Graphical functions with I/O can now be inlined in the generated code. You can specify inlining behavior (**auto**, **force inline**, **force no inline**) for every graphical function via its property dialog box. **auto** refers to a default mode in which the Stateflow Coder code generation software decides when it is advantageous to inline a graphical function.

Performance Improvements

When possible, Simulink input and output data to a Stateflow chart are made local, reducing RAM size. Whenever possible, these local inputs are conditionally evaluated (via *expression folding*) resulting in execution speed improvements.

Unnecessary Data Initialization Removed

Unnecessary data initialization statements are now removed from the code generated for graphical functions.

Simple If Statements Optimized

A simple Boolean expression evaluation scheme is used to optimize if statements such as `if(1)`, `if(0)`, `if(ON==OFF)`.

Greater Usability

Undo Operation in the Stateflow Editor

You can undo and redo operations you perform in the Stateflow Editor. When you undo an operation, you reverse the last edit operation you performed. After you undo operations, you can also redo them one-at-a-time. When you place your mouse cursor over the Undo or Redo buttons, the tooltip that appears indicates the nature of the operation to undo or redo.

New Model Report

A new model report is available for making comprehensive reports of Stateflow objects. Make this report in the Stateflow Editor by selecting **File > Print Details**.

Stateflow Explorer Remembers Its Position and Size

Stateflow Explorer now remembers its position and size across sessions.

Version 4.1 (R12.1) Stateflow and Stateflow Coder Software

This table summarizes what's new in V4.1 (R12.1):

New Features and Changes	Version Compatibility Considerations	Fixed Bugs and Known Problems
Yes Details below	Yes—Details labeled as Compatibility Considerations , below. See also Summary.	“Bug Fixes” on page 150

New features and changes introduced in this version are:

- “Smart Transitions” on page 148
- “Search & Replace Tool Enhancements” on page 149
- “Stateflow Chart Notes” on page 149
- “Model Coverage Tool” on page 149
- “Single-Precision Constants in Code Generation” on page 150
- “Transition Actions into Junctions Disallowed” on page 150
- “Bug Fixes” on page 150

Smart Transitions

Stateflow charts now include the graphical innovation of smart transitions whose ends slide around the surfaces of states and junctions. When the source and/or destination objects are moved and resized in the chart, these transitions use sliding and other behaviors to enable users to produce an aesthetically pleasing chart.

See “Extending Transitions with Smart Behavior” in the Stateflow documentation.

Note Transitions are automatically created with smart behavior on the assumption that this behavior is almost always desirable. However, *self-loop* transitions, must be created without smart transition behavior. See “Self-Loop Transitions” in the Stateflow documentation for instructions.

Search & Replace Tool Enhancements

The Stateflow Search & Replace tool has been modified with the following enhancements:

- Regular expression tokenized replacements
Allows you to dynamically choose replacement text based on matched text.
- Case insensitivity/case preservation
Replaces text with different sensitivities to the use of upper or lower case characters in the found text.
- Addition of a **Search in:** field
Now you can select any Stateflow chart in your Simulink model or select the entire Stateflow machine.

Stateflow Chart Notes

You can now add annotations to your Stateflow charts that are similar to annotations in Simulink models.

For more information, see “Using Notes to Extend Charts” in the Stateflow documentation.

Model Coverage Tool

The Simulink Model Coverage tool has been modified to perform model coverage calculations for decisions and conditions of decision in the Stateflow machine and its charts, states, and transitions. This enhancement includes Condition and MCDC coverage.

Single-Precision Constants in Code Generation

Code generation now emits single-precision constants with a trailing F to the C-compiler. This results in lower ROM size. For example, the action language statement `x = y + single(1.375)`; now generates the code `x = y + 1.375F`;

Transition Actions into Junctions Disallowed

Transition actions are now permitted only on transitions that terminate on states. For the following reasons, transition actions are no longer permitted on transitions that terminate on junctions:

- The semantics of transition actions for transitions into junctions are complex and easily misunderstood and misused.
- The complex semantics of these transition actions also result in generated code that is inefficient. Eliminating these transition actions not only simplifies charts but also results in generated code that is much more efficient.

Compatibility Considerations

If your current model contains transition actions that terminate on junctions, they are flagged with an error. In most cases, replacing these transition actions with condition actions gives identical chart behavior.

Bug Fixes

The following bugs have been fixed in V4.1.

Editing Crossing Transitions out of Grouped Subcharts

Editing crossing transitions out of grouped subcharts caused model corruptions in Versions 3.0 through 4.0.2.

Disabled and Restored Library Chart Links

Stateflow library chart links that are disabled and then restored caused model corruptions in Versions 3.0 through 4.0.2.

Too Many Action Statements During Simulation

Stateflow Debugger caused an error during simulation when a state has more than 255 action statements in Versions 1.0 through 4.0.2.

False State Inconsistency Run-Time Error

Charts within a Simulink enabled subsystem produced a false state inconsistency run-time error when the subsystem was disabled in Versions 2.0 through 4.0.3.

MATLAB Variables Improperly Overwritten

Selecting **Save final value to base workspace** in the properties dialog box for a data item caused unrelated MATLAB variables in the workspace to be overwritten in Versions 4.0 through 4.0.3.

Target Options Fields Overwritten

The **Custom Initialization** and **Custom Termination** fields in the Target Options dialog box were overwritten by empty strings in the data dictionary in Version 4.0.3.

Transitions Assertions

Transitions containing a temporal trigger combined with other event triggers, such as `after(3E) | E2 | E3`, caused assertion errors during parsing in Version 4.0.3.

Build Failures with Custom Code

When including custom code, build failures occurred due to DOS shell command-line length limitations because all user-defined folders on the MATLAB path were added to the include directory list in Version 4.0.3.

Code Generation for Default Transitions in Parallel States

States with parallel decomposition with default transition paths generated incorrect code in Versions 3.0 through 4.0.2.

Code Generation for Double-Precision Whole Numbers

Double-precision whole numbers were incorrectly emitted as integers (e.g., 5 instead of 5.0) in code generation in Versions 3.0 through 4.0.2.

Version 4.0 (R12) Stateflow and Stateflow Coder Software

This table summarizes what's new in V4.0 (R12):

New Features and Changes	Version Compatibility Considerations	Fixed Bugs and Known Problems
Yes Details below	Yes—Details labeled as Compatibility Considerations , below. See also Summary.	No

New features and changes introduced in this version are described here:

Improved Code Generation

Code generation from Stateflow Coder software has been significantly improved:

- The code looks hand written.
- ROM and RAM size rivals hand-written code.
- Code generation is faster.

Automatic Upgrade to Release 12 of MATLAB Product Family

This release automatically upgrades all features introduced in previous versions of Stateflow software to work with Release 12 of the MATLAB product family.

Compatibility Considerations

If you open a machine (model) made with a previous version of Stateflow software, you will see a warning message similar to the following:

```
Warning: An old Stateflow machine 'sf_car' is loaded.
This machine was saved with an older Stateflow 3.0311061000001.
Please save this machine again!
```

By saving the machine in the most recent version of Stateflow software, it is automatically upgraded.

Version 3.0 (R11) Stateflow and Stateflow Coder Software

This table summarizes what's new in V 3.0 (R11):

New Features and Changes	Version Compatibility Considerations	Fixed Bugs and Known Problems
Yes Details below	No	No

New features and changes introduced in this version are:

- “Temporal Logic” on page 155
- “Subcharts” on page 156
- “Graphical Functions” on page 156
- “Symbol Autocreation Wizard” on page 156
- “Command Toolbar” on page 157
- “Navigation Toolbar” on page 157
- “Straight Line Transitions” on page 157
- “Workspace-Based Data” on page 157
- “Explorer Copy Properties” on page 157
- “Library Link Icons” on page 158

Temporal Logic

You can now use temporal conditions (before, after, at, every time) to determine the activation of transitions and duration of state activation. Temporal logic provides a simple paradigm for event scheduling and allows your Stateflow chart to express clearly and simply the time-dependent behavior of a system.

See “Using Temporal Logic in State Actions and Transitions” in the Stateflow documentation.

Subcharts

You can now create charts within charts. A chart that is embedded in another chart is called a subchart. A subchart can contain anything a top-level chart can, including other subcharts. In fact, you can nest subcharts to any level. A subchart appears as a labeled block in the chart that contains it. You can create transitions among objects residing in different subcharts existing at the same level or at different levels. A transition that crosses subchart boundaries in this fashion is called a supertransition.

Subcharts help you reduce a complex chart to a set of simpler, hierarchically organized diagrams. This makes the chart easier to understand and maintain, without changing the semantics of the chart in any way.

Subchart boundaries are ignored when you simulate and generate code from Stateflow charts.

See “Using Subcharts to Extend Charts” in the Stateflow documentation.

Graphical Functions

A graphical function is a function defined by a flow graph. Graphical functions are similar to textual functions, such as C and MATLAB functions. Like textual functions, graphical functions can accept arguments and return results. You invoke graphical functions in transition and state actions in the same way you invoke C and MATLAB functions. Unlike C and MATLAB functions, however, graphical functions are full-fledged Stateflow objects. You use the Stateflow Editor to create them, and they reside in your model along with the charts that invoke them. This makes graphical functions easier to create, access, and manage than textual functions, whose creation requires external tools and whose definitions reside separately from the model.

See “Using Graphical Functions to Extend Actions” in the Stateflow documentation.

Symbol Autocreation Wizard

The Symbol Autocreation Wizard helps you add missing data and events to your Stateflow charts. When you parse the chart or run the simulation, this wizard detects data and events that you have not previously defined. The

wizard then opens automatically and heuristically recommends attributes for the unresolved data or events to help you define these symbols.

See “Symbol Autocreation Wizard” in the Stateflow documentation.

Command Toolbar

The Stateflow Editor now contains a toolbar containing buttons for the most commonly used editing and simulation commands. The toolbar saves searching through menus for these commands.

Navigation Toolbar

This toolbar contains buttons for navigating a chart hierarchy.

Straight Line Transitions

You can now create straight lines between junctions. Transitions that are almost straight are automatically snapped straight during edit time. The snap-to-grid functionality helps align connected junctions vertically and horizontally.

Workspace-Based Data

Data items can now be initialized from identically named variables in the MATLAB workspace and/or copied back to the workspace at the end of a simulation. Workspace-initialized constants consume no memory in generated code.

Explorer Copy Properties

Stateflow Explorer now allows you to pick up properties from one data/event/target item and apply them to another data/event/target item or a group of items. This enhancement speeds up the process of creating charts that have objects with similar sets of properties.

Library Link Icons

In the Stateflow Explorer, an arrow distinguishes icons of library links from those of actual charts. Clicking a library link icon opens the library chart in the Stateflow Editor.

Compatibility Summary for Stateflow Software

This table summarizes new features and changes that might cause incompatibilities when you upgrade from an earlier version, or when you use files on multiple versions. Details are provided in the description of the new feature or change.

Version (Release)	New Features and Changes with Version Compatibility Impact
Latest Version V8.0 (R2011b)	See the Compatibility Considerations subheading for each of these new features or changes: <ul style="list-style-type: none"> • “Support for Editing Block Masks of Chart and Truth Table Blocks” on page 10
V7.7 (R2011a)	See the Compatibility Considerations subheading for each of these new features or changes: <ul style="list-style-type: none"> • “Use of MATLAB Expressions to Specify Data Size” on page 14 • “New Signal Logging Format That Simplifies Access to States and Local Data” on page 20 • “Initial Value Vectors with Fixed-Point or Enumerated Values Now Evaluate Correctly” on page 22
V7.6.1 (R2010bSP1)	None

Version (Release)	New Features and Changes with Version Compatibility Impact
V7.6 (R2010b)	<p>See the Compatibility Considerations subheading for each of these new features or changes:</p> <ul style="list-style-type: none">• “Passing Real Values to Function Inputs of Complex Type Disallowed” on page 28
V7.5 (R2010a)	<p>See the Compatibility Considerations subheading for each of these new features or changes:</p> <ul style="list-style-type: none">• “Data Change Implicit Event No Longer Supports Machine-Parented Data” on page 35• “Support for Machine-Parented Events Completely Removed” on page 35
V7.4.1 (R2009bSP1)	None
V7.4 (R2009b)	<p>See the Compatibility Considerations subheading for each of these new features or changes:</p> <ul style="list-style-type: none">• “New Compilation Report for Embedded MATLAB Functions in Stateflow Charts” on page 42

Version (Release)	New Features and Changes with Version Compatibility Impact
V7.3 (R2009a)	<p>See the Compatibility Considerations subheading for each of these new features or changes:</p> <ul style="list-style-type: none"> • “Use of en, du, ex, entry, during, and exit for Data and Event Names Being Disallowed in a Future Version” on page 50 • “Support for Machine-Parented Events Being Removed in a Future Version” on page 50
V7.2 (R2008b)	<p>See the Compatibility Considerations subheading for each of these new features or changes:</p> <ul style="list-style-type: none"> • “Unified Simulation and Embeddable Code Generation Options for Stateflow Charts and Truth Table Blocks” on page 54 • “Change in Casting Behavior When Calling MATLAB Functions in a Chart” on page 89 • “Use of Output Data with Change Detection Operators Disallowed for Initialize-Outputs-at-Wakeup Mode” on page 90 • “New Configuration Set Created When Loading Nonlibrary Models with an Active Configuration Reference” on page 91
V7.1.1 (R2008a+)	None

Version (Release)	New Features and Changes with Version Compatibility Impact
V7.1 (R2008a)	See the Compatibility Considerations subheading for each of these new features or changes: <ul style="list-style-type: none"> • “Using a Specific Path to a State for the in Operator” on page 96 • “Specifying Scaling Explicitly for Fixed-Point Data” on page 99
V7.0.1 (R2007b+)	None
V7.0 (R2007b)	See the Compatibility Considerations subheading for each of these new features or changes: <ul style="list-style-type: none"> • “Enhanced Continuous-Time Support with Zero-Crossing Detection” on page 103 • “Support for Inheriting Data Properties from Simulink Signal Objects Via Explicit Resolution” on page 103
V6.6.1 (R2007a+)	None
V6.6 (R2007a)	None
V6.5 (R2006b)	None
V6.4.1 (R2006a+)	None
V6.4 (R2006a)	None
V6.3 (R14SP3)	None
V6.2 (R14SP2)	None
V6.1 (R14SP1)	None

Version (Release)	New Features and Changes with Version Compatibility Impact
V6.0 (R14)	<p>See the Compatibility Considerations subheading for each of these new features or changes:</p> <ul style="list-style-type: none"> • “Target Configuration Integrated with Simulink Targets” on page 126 • “Parameter Scope for Simulink Parameters in Stateflow Charts” on page 129 • “Defining Temporary Data for Charts” on page 130 • “Fixed-Point Autoscaling of Stateflow Data” on page 131 • “Support for Directional Vectors” on page 131 • “Trailing 1’s Removed After Second Dimension of Array Size” on page 136
V5.1.1 (R13SP1)	<p>See the Compatibility Considerations subheading for this new feature or change:</p> <ul style="list-style-type: none"> • “Code Generation Speed Improved” on page 139
V5.1 (R13+)	None

Version (Release)	New Features and Changes with Version Compatibility Impact
V5.0 (R13)	See the Compatibility Considerations subheading for this new feature or change: <ul style="list-style-type: none">• “Error on Transition Action Into Junction with Following Condition” on page 145
V4.1 (R12.1)	See the Compatibility Considerations subheading for this new feature or change: <ul style="list-style-type: none">• “Transition Actions into Junctions Disallowed” on page 150
V4.0 (R12)	See the Compatibility Considerations subheading for this new feature or change: <ul style="list-style-type: none">• “Automatic Upgrade to Release 12 of MATLAB Product Family” on page 153
V3.0 (R11)	None